

# MOBIUZ™

## EXplore the Possibilities



BenQ



### Gaming Monitor EX2510

EX2510 delivers incredible BenQ proprietary tech. HDRi optimizes images for improved color, contrast, and detail. True sound audio by treVolo surrounds you with rich music and subtle auditory cues. Exit the routine and expand your reality. This 144Hz IPS monitor has lightning-fast 1ms MPRT and FreeSync Premium to minimize blur and artifacts.

**BenQ**

Because it matters

# MOBIUZ Gaming Monitor EX2510

## HDRi: Intelligent Optimization

HDRi immersive detail draws you into the game. A discrete sensor detects ambient light levels and assesses then adjusts on-screen HDR images so you see every detail. Customized color performance, detail contrast, and image clarity add intensity.



## EXceptional Audio



EX2510 has two 2.5W speakers and a DSP (Digital Signal Processor) with three customized sound modes. You select the audio setting suited to your scenario. For complete immersion, the DSP and speaker array offer depth, emotion, and intensity like never before.



Full Audio Intensity



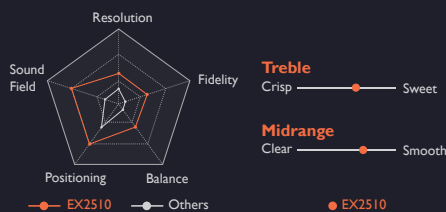
Mind-blowing Realism



Pitch Perfect Fidelity

## Superior True Sound by treVolo

The BenQ treVolo experts approach sound design from the perspective of an audiophile. Get full acoustic enjoyment with five sound settings that enable precise treble, rich mid-range, and resounding bass -- all without the clutter of external speakers.



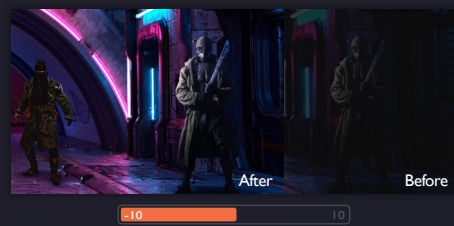
## Design That Excites

Equip yourself for adventure. MOBIUZ EX2510 144Hz monitor is action-ready with 1ms MPRT, FreeSync Premium, and image optimizers that elevate your gaming excitement.

**ColorVibrance** | Foes are exposed against any background

**Black eQualizer** | Reveal enemies hiding in the dark

**Light Tuner** | Selectable gaming settings for ideal display



**Scenario Mapping** | Settings automatically change with source switch



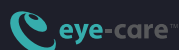
EX2510	
Product Color	Dark Grey
<b>Panel</b>	
LCD Size (inch)	24.5"
Aspect Ratio	16 : 9
Resolution (max.)	1920x1080
Display Area(mm)	543.744 x 302.616
Pixel Pitch (mm)	0.283
Brightness (typ)	400
Native Contrast (typ.)	1000:1
Panel Type	IPS
Viewing Angle (L/R;U/D) (CR>=10)	178/178
Response time	1ms (MPRT) / 2ms(GTG)
Display Colors	16.7 million colors
Color Gamut	99% sRGB
Backlight	LED
<b>Dimension &amp; Weight</b>	
Dimensions (H x VV x D mm)	521.47x557.59x216.65
Net Weight (kg)	5.6
Gross Weight (kg)	7.7
<b>Special feature</b>	
Video Format Support	Yes
AMA	Yes
Flicker-free Technology	Yes
Color Mode	HDR / GameHDRi / CinemaHDRi / FPS / RPG / Racing game / Standard / sRGB / M-book / ePaper
Brightness Intelligence Plus (B.I.+)	Yes
Color Weakness	Yes
ePaper mode	Yes
Low Blue Light	Yes
Light Tuner	Yes
Color Vibrance	Yes
Black eQualizer	Yes
VESA Wall Mounting	100 x 100
Tilt (down/up)	-5° ~ 20°
Swivel	20° / 20°
High adjustment	130mm
K Locker	Yes
HDR Mode	Yes
Other Accessories	Power cord (1.5m) HDMI 1.4 cable(1.5m)
<b>I/O</b>	
Speaker	2.5Wx2
HDMI	v2.0 x 2
DP Input	v1.2 x 1
Headphone Jack	Yes
<b>Power</b>	
Power Supply(90~264 AC)	Built-in
Power Consumption(On mode)	50W
Power Consumption(Power saving mode)	0.5W
Power Consumption(Off mode)	0.3W
MTBF(hr, exclude lamp)	60,000
<b>Certification</b>	
TUV Certificate	TUV Flicker-free TUV Low Blue Light
Mac Compatible	Yes
Windows® Compatible	Windows® 10, 8.1, 8, 7

I/O	
Speaker	2.5Wx2
HDMI	v2.0 x 2
DP Input	v1.2 x 1
Headphone Jack	Yes

Power	
Power Supply(90~264 AC)	Built-in
Power Consumption(On mode)	50W
Power Consumption(Power saving mode)	0.5W
Power Consumption(Off mode)	0.3W
MTBF(hr, exclude lamp)	60,000

Certification	
TUV Certificate	TUV Flicker-free TUV Low Blue Light
Mac Compatible	Yes
Windows® Compatible	Windows® 10, 8.1, 8, 7

© 2020 BenQ Corp. Specification may vary by region, please visit your local stores for details. Actual product's features and specifications are subject to change without notice. This material may include corporate names and trademarks of third parties which are the properties of the third parties respectively. Doc: LCD\_EX2510\_DS\_EN\_0618



## Eye-Care for EXtended Play

BenQ's industry-leading eye-care tech reduces eye strain, headaches, and fatigue while improving viewer comfort. See and feel the difference for yourself.



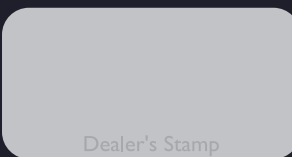
Flicker-Free Eye Protection



Brightness Intelligence Plus



Low Blue Light



Because it matters