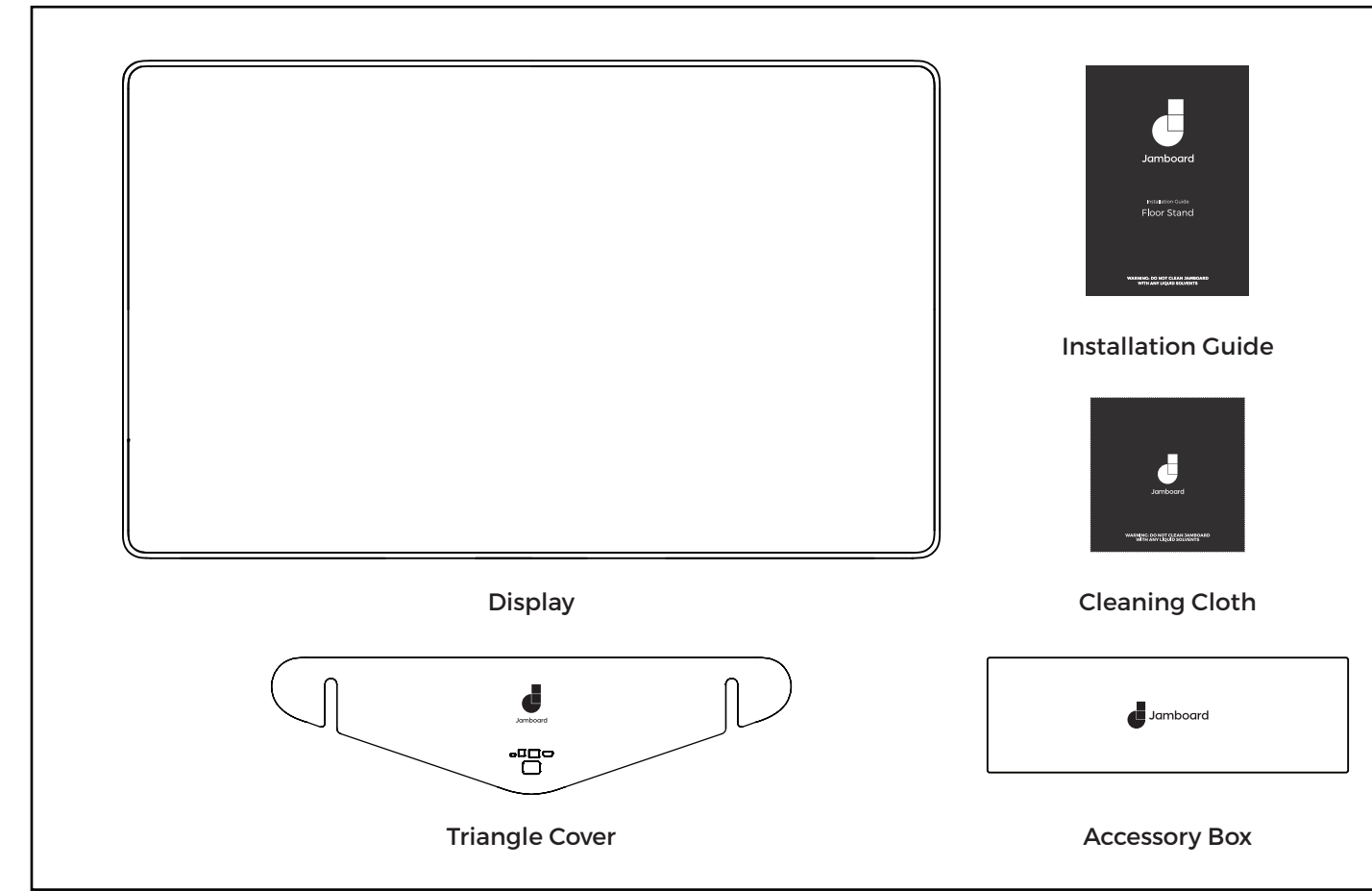


## Installation Guide Wall Mount

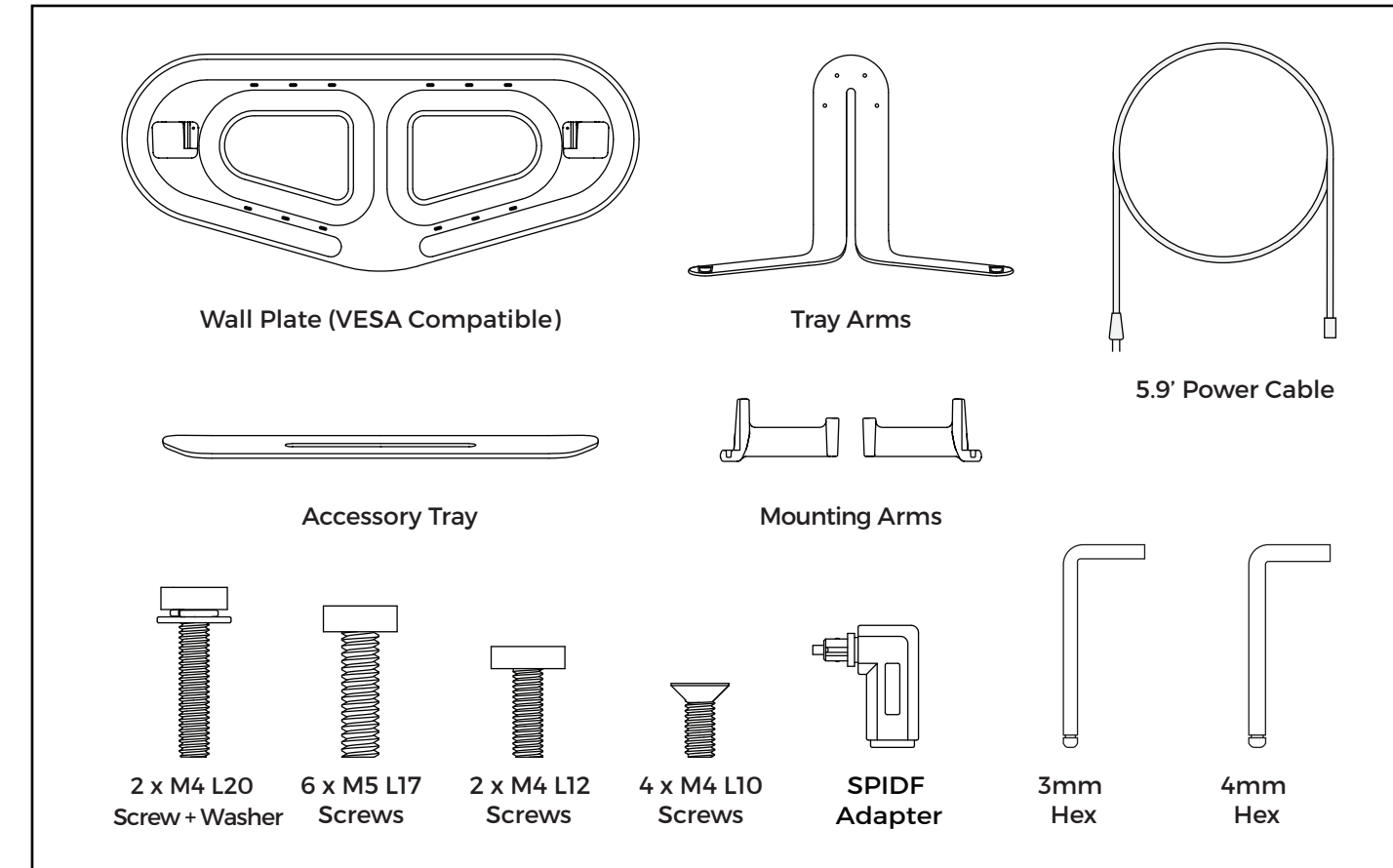
**WARNING: DO NOT CLEAN JAMBOARD  
WITH ANY LIQUID SOLVENTS**

### Wall Mount Installation Parts

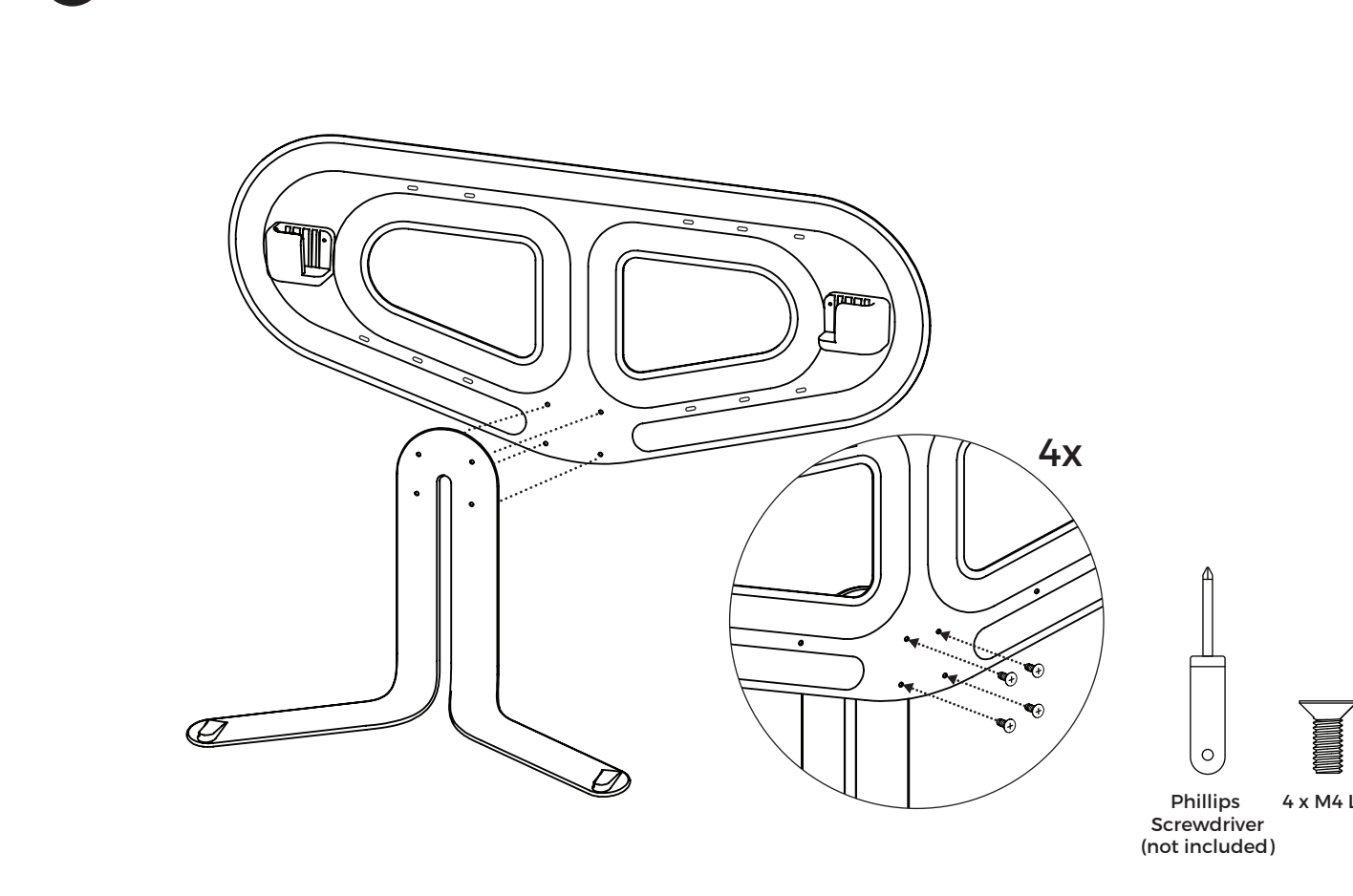
Display and Wall Mount Box



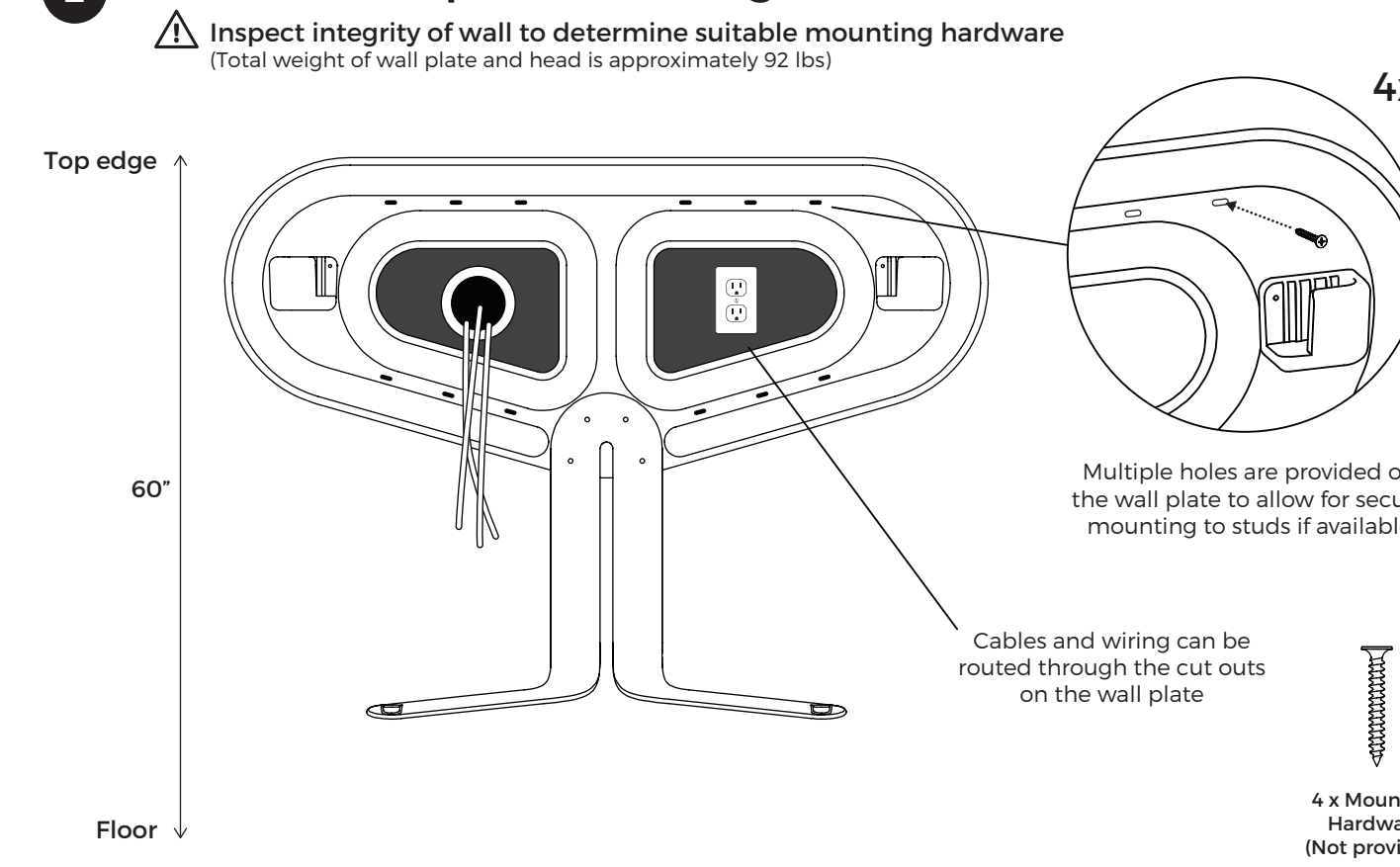
Wall Mount, Tray and Tools Box



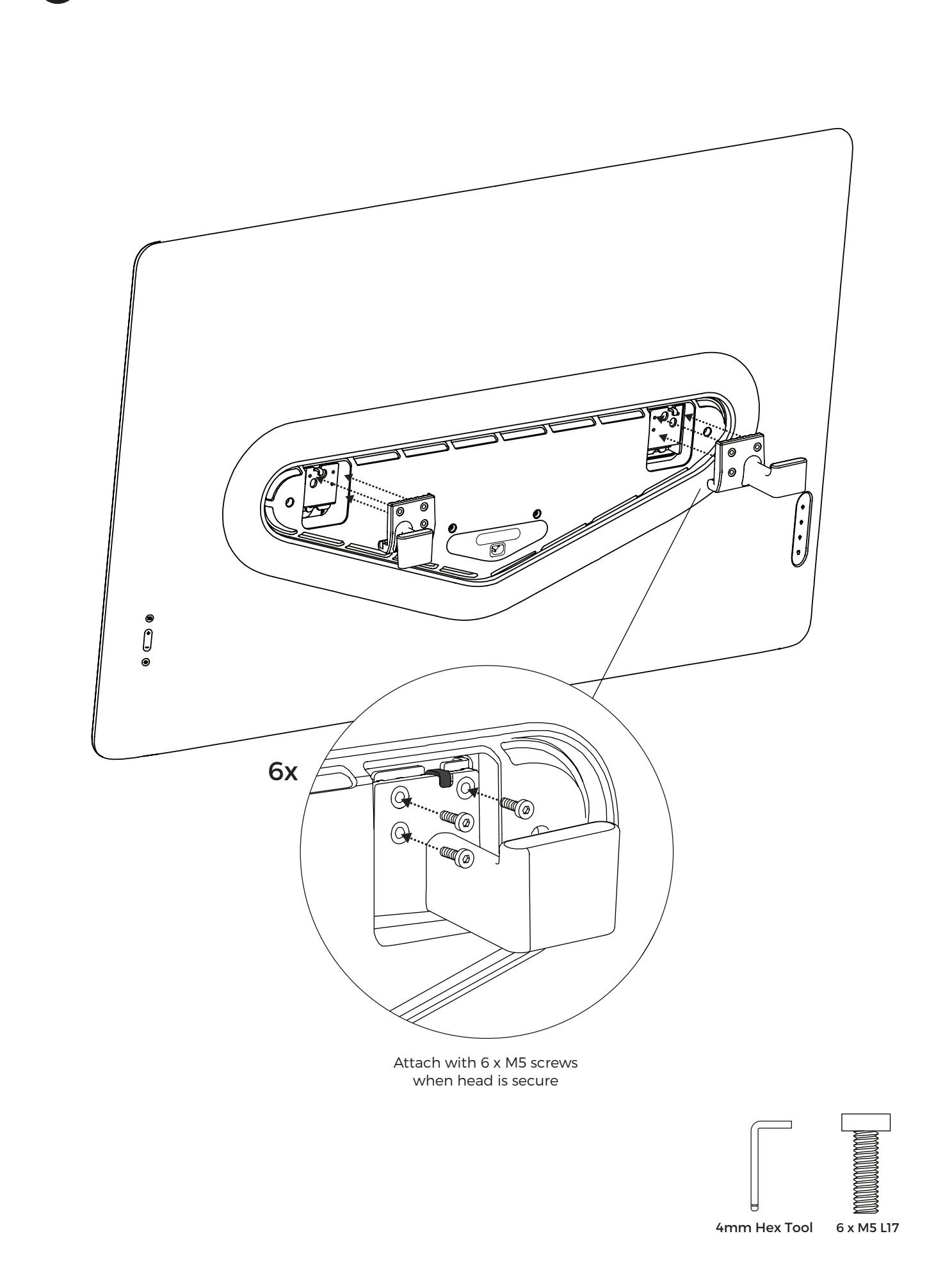
### 1 Attach tray arms to wall plate



### 2 Mount wall plate to designated wall

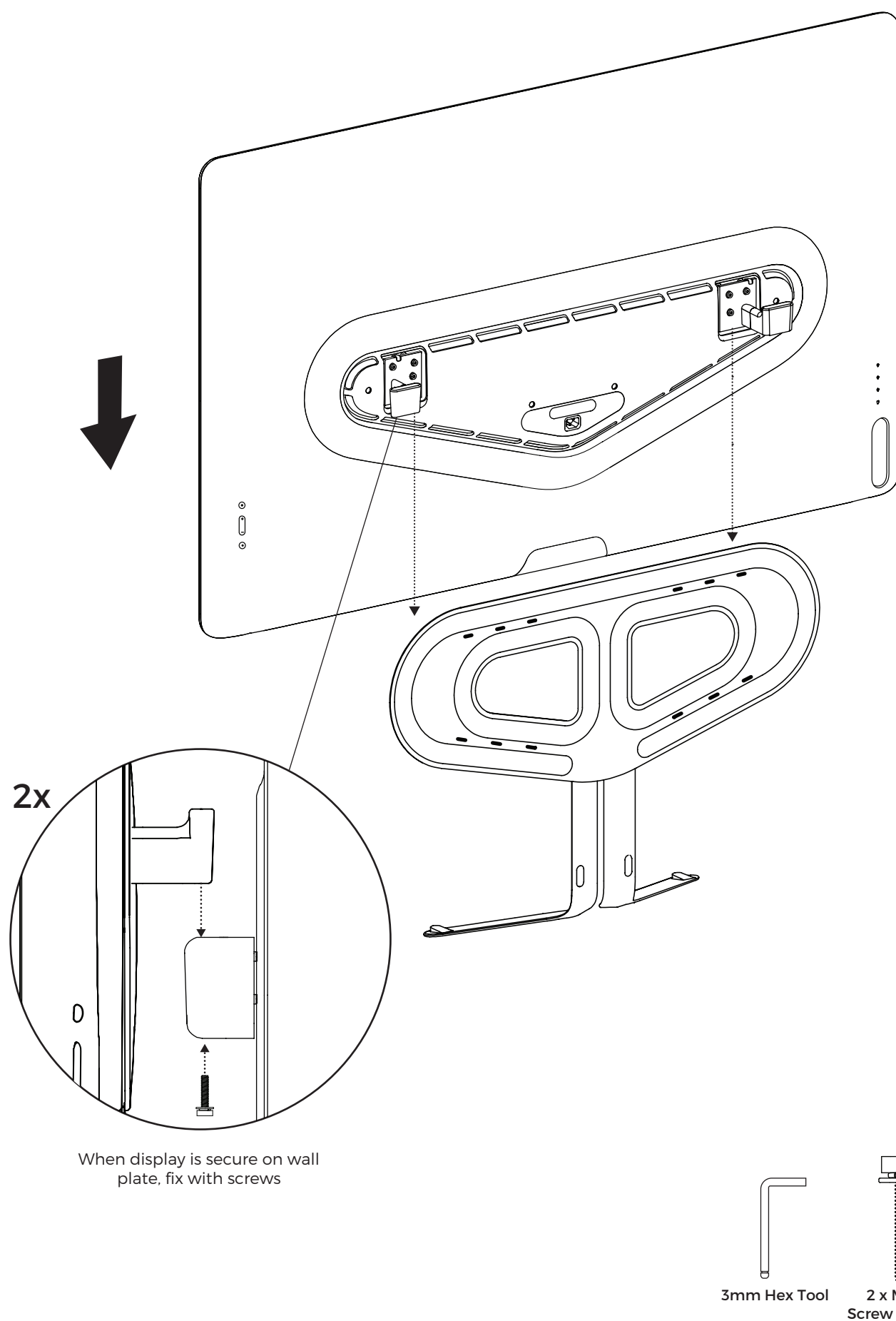


### 3 Attach mounting arms to display via 6 x M5 Screws



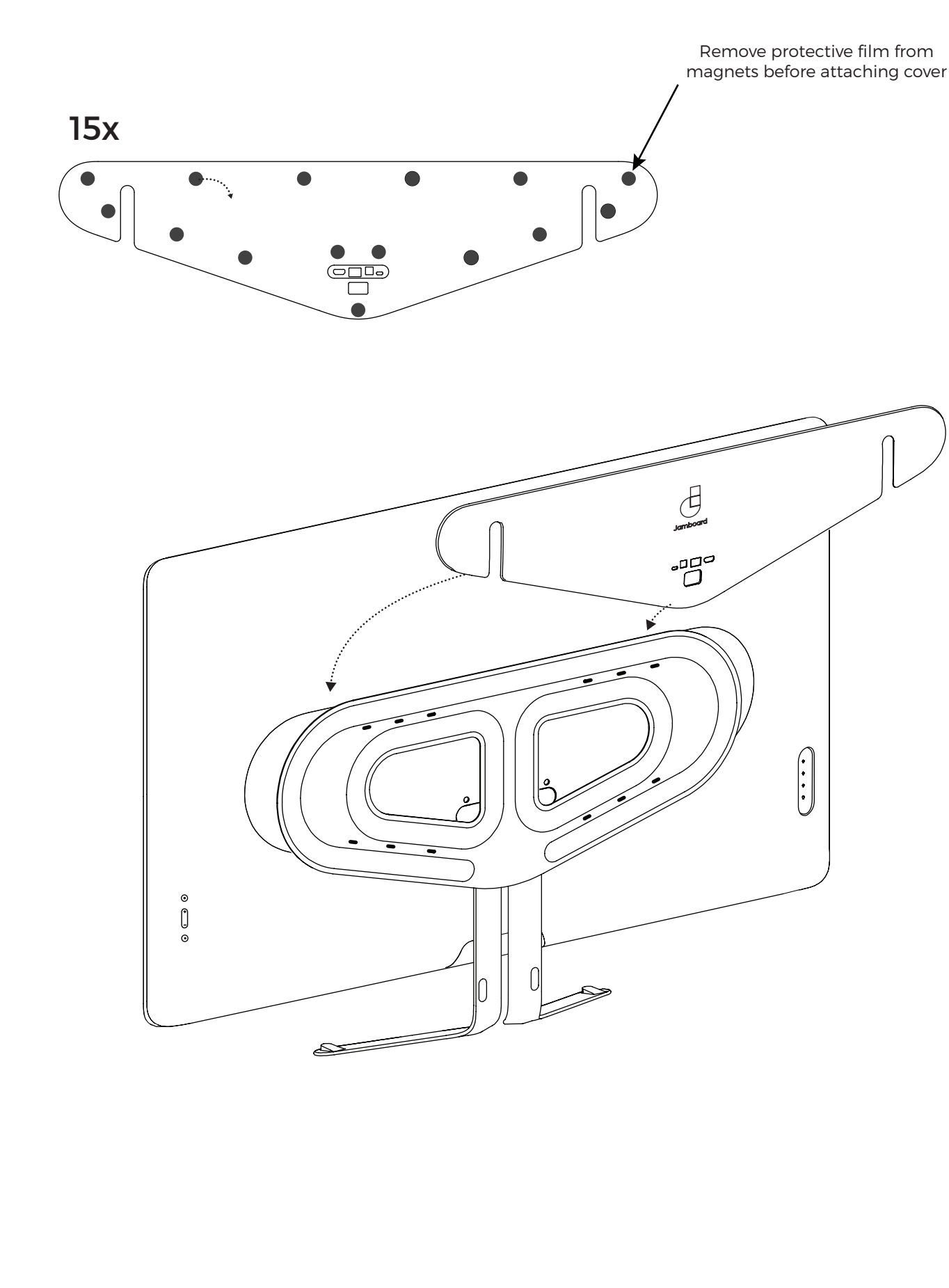
### 4 Slide display onto wall plate, fix via 2 x M4 Screws

⚠ This assembly step requires minimum 2 people

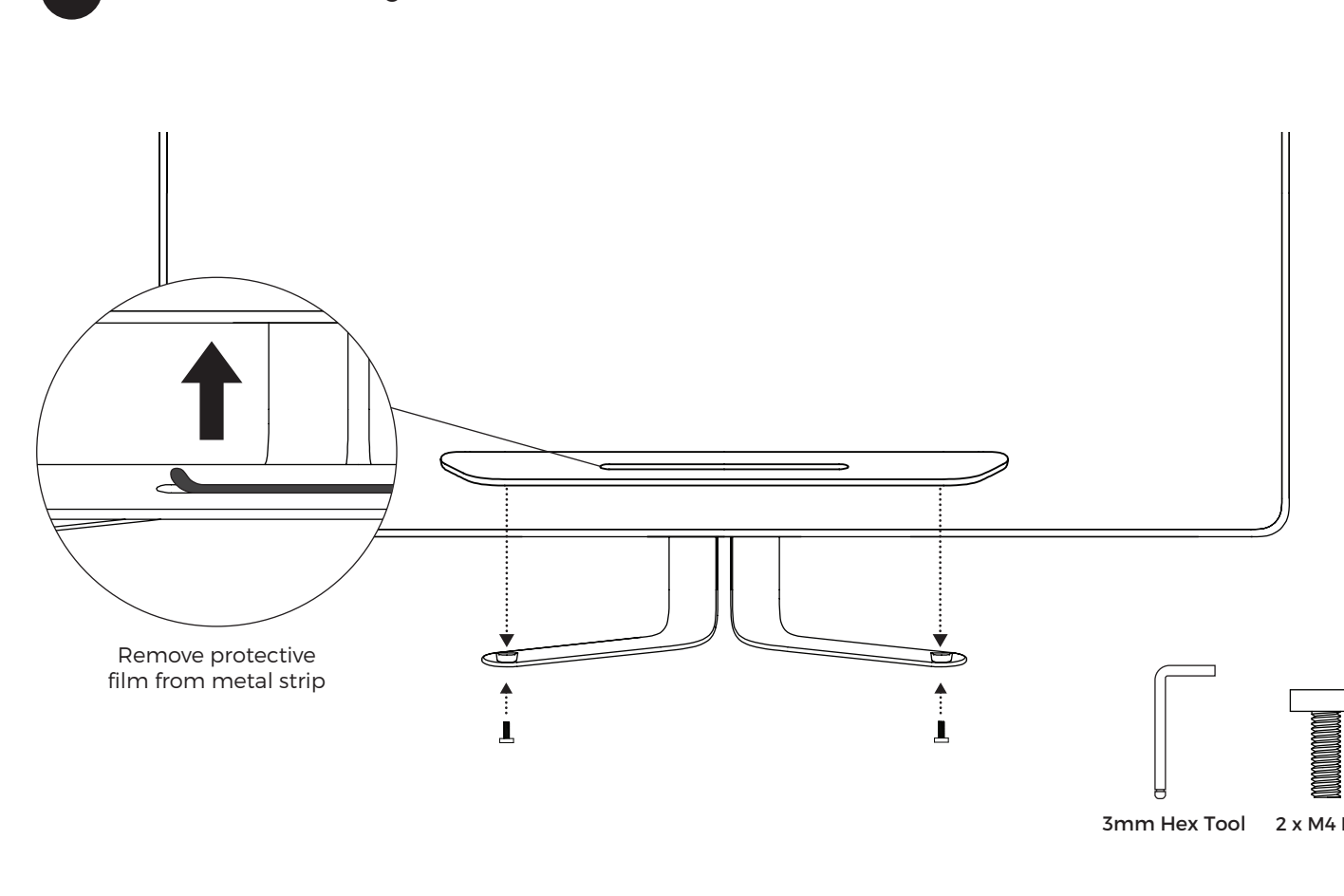


### 5 Attach triangle cover with embedded magnets

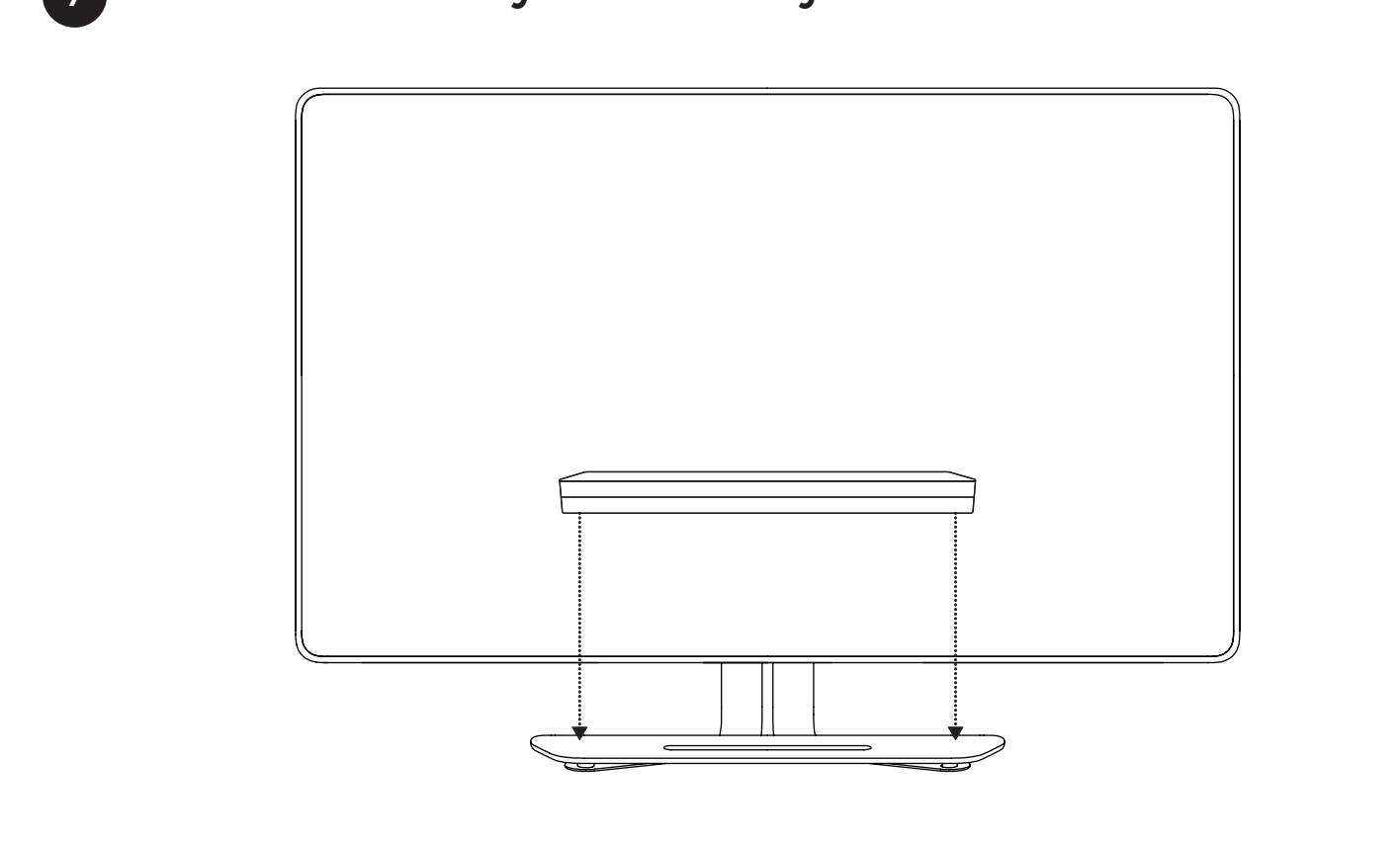
Remove protective film from magnets before attaching cover



### 6 Attach tray to wishbone via 2 x M4 Screws



### 7 Place accessory box on tray



**WARNING:  
DO NOT CLEAN JAMBOARD  
WITH ANY LIQUID SOLVENTS**

