



QCast Mirror - QP20
HDMI Wireless Dongle
Quick Start Guide

Copyright

© 2017 BenQ Corporation. All rights reserved. No part of this publication may be reproduced, transmitted, transcribed, stored in a retrieval system or translated into any language or computer language, in any form or by any means, electronic, mechanical, magnetic, optical, chemical, manual or otherwise, without the prior written permission of BenQ Corporation.

All other logos, products, or company names mentioned in this document may be the registered trademarks or copyrights of their respective companies, and are used for informational purposes only.

Disclaimer

BenQ Corporation makes no representations or warranties, either expressed or implied, with respect to the contents hereof and specifically disclaims any warranties, merchantability or fitness for any particular purpose. Further, BenQ Corporation reserves the right to revise this publication and to make changes from time to time in the contents hereof without obligation of BenQ Corporation to notify any person of such revision or changes.

Screen images and icons in this manual are simulated for illustrative purposes only. Actual displays may vary.

BenQ is not responsible for the content of the websites or of similar resources, which are maintained and controlled by third parties, that may be linked from this product. Providing links to those websites or to similar resources does not mean that BenQ makes any warranty or representation to their content by expression or by implication. Any third party content or service preinstalled in this product is provided "as is". BenQ does not, by expression or by implication, make any warrant to the content or to the services provided by third parties. BenQ does not warrant or guarantee that the content or services provided by third parties are accurate, effective, most up-to-date, legal, or complete. Under no circumstances shall BenQ be liable for the content or services provided by third parties including their negligence.

Services provided by third parties may be terminated temporarily or permanently. BenQ does not warrant or guarantee that the content or services provided by third parties are in good condition at any time, and is not liable for the termination of the said content and services.

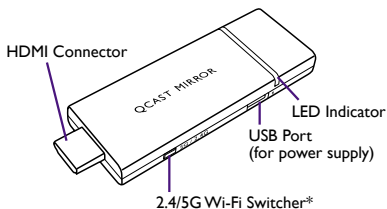
In addition, BenQ is not involved in any transactions you conduct in the websites or similar resources maintained by third parties. You should contact the content or service providers for any questions, concerns, or disputes.

Package Contents



- QCast Mirror HDMI wireless dongle
- Micro USB cable
- Quick start guide

Product Overview



* Press this button or enter the Advanced Setting to switch 2.4G/5G Wifi.

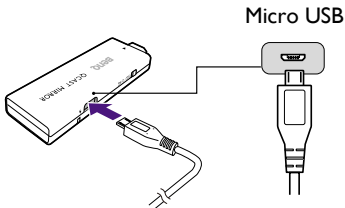
Operation Instructions

Connecting the dongle to your projector

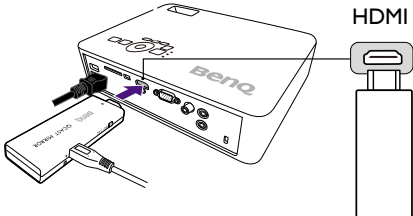


Depending on your device's operating system, different installation procedures and setup are required. Read this document and on-screen instructions (if provided) carefully.

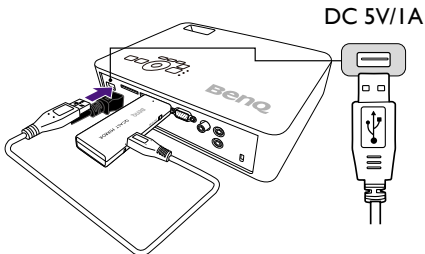
1



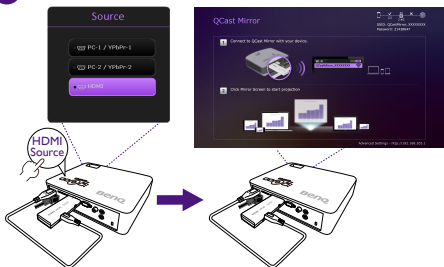
2



3



4

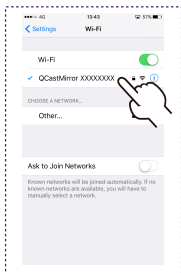
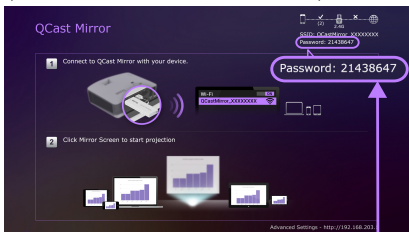


Mirroring the content from your device

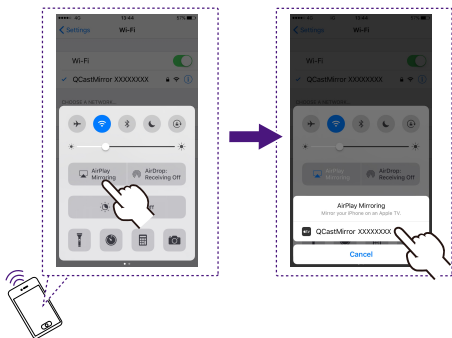
For SmartPhone/Tablet

- iOS

- 1 Link QCast Mirror to your device in "Wifi Setting".
(Select QCast Mirror SSID and enter Password.)

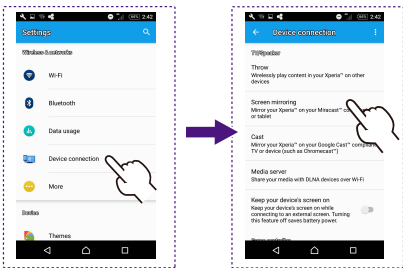


2 Select Mirror Screen Function to start projection.

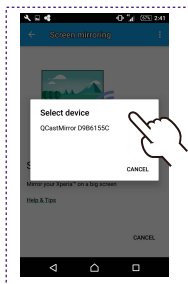


• Android

- 1 Select Mirror Screen Function from “Device Connection” in “Setting” of your device.



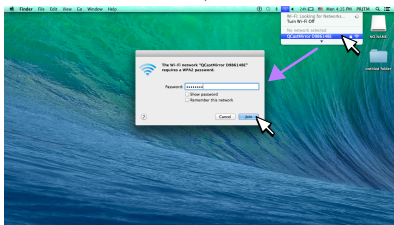
- 2 Select QCast Mirror SSID to start projection.



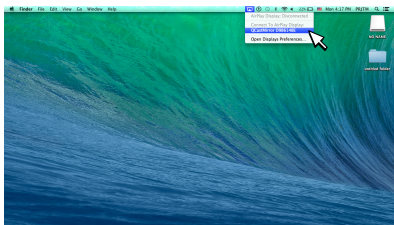
For Desktop/Laptop Computers

- Mac OS

- 1 Link QCast Mirror to your device in Wifi list. (Select QCast Mirror SSID and enter Password.)

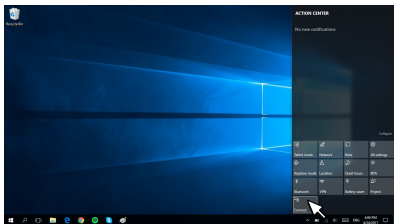


- 2 Select Mirror Screen Function to start projection.

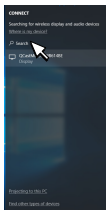


- Windows OS

1 Select Mirror Screen Function from "Connect" of your device.

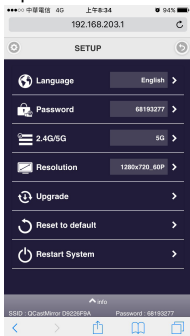


2 Select QCast Mirror SSID to start projection.



Advanced Settings

Connect SSID/Password and open web browser in your device to link to <http://192.168.203.1>



- **Language:** sets the language for Advanced Settings page.
 - **Password:** changes the Wi-Fi password for the projector.
 - **2.4G/5G:** selects 2.4G or 5G Wi-Fi.
 - **Resolution:** sets the output resolution.
 - **Upgrade:** updates to the latest firmware (Please note that this function requires internet connection).
 - **Reset to default:** returns all settings to the factory preset values.
 - **Restart System:** reboots QCast Mirror Dongle.
- *Please restart QCast Mirror Dongle after settings are changed.

Product Specification

Model Name	QP20 - QCast Mirror HDMI Wireless Dongle	
Dimensions	84 x 11 x 32 mm (W x H x D)	
Input Terminals	Micro USB	
Output Terminals	HDMI 1.2	
Weight	30g approx.	
Wireless Standard	IEEE 802.11a/b/g/n/ac	
Security	WPA/WPA2	
LED	Blue LED indication for Power and WiFi status	
Output Resolution	1280x720 @60hz	1920x1080 @24hz
	1920x1080 @30hz	
Frequency Band	2.4G/5G (default setting)	
Color	White	
CPU	AM8251 @500Mhz	
DRAM	DDR3 128MB	
NAND	128MB	
Power	DC 5V/1A, through Micro USB port	
Video support	Max. 1080p@30p video decode	

System Requirement

PC	Windows OS	Windows 8.1 and later with Miracast support *Mirror Screen support depends on Wi-Fi module and graphics chipset.
	Mac OS	Mac OS X 10.9 and above with Mirror Screen support *Recommended Models: Mac Book series and iMac series after E/2013
Tablet/Smart-Phone	iOS	iOS9 and later with Mirror Screen support
	Android	Android 4 above with Mirror Screen support
	Windows Phone	Windows Phone 8.1 and later with Mirror Screen support



5G Wifi only supports Band 1 (5.150-5.250GHz)
Transmission quality depends on wifi environment and mobile devices compatibility from different brands. For further information, please visit: // www.benq.com/

Regulatory Statements

Note: Not all models are available in all regions. If certain safety regulations are required for specific region, BenQ ensures that products available in that region are complied with the requested regulations.

FCC statement (for the United States only)

1. This device complies with Part 15 of the FCC Rules. Operation is subject to the following two conditions:
 - (1) This device may not cause harmful interference.
 - (2) This device must accept any interference received, including interference that may cause undesired operation.
2. Changes or modifications not expressly approved by the party responsible for compliance could void the user's authority to operate the equipment.

NOTE: This equipment has been tested and found to comply with the limits for a Class B digital device, pursuant to Part 15 of the FCC Rules. These limits are designed to provide reasonable protection against harmful interference in a residential installation.

This equipment generates uses and can radiate radio frequency energy and, if not installed and used in accordance with the instructions, may cause harmful interference to radio communications. However, there is no guarantee that interference will not occur in a particular installation. If this equipment does cause harmful interference to radio or television reception, which can be determined by turning the equipment off and on, the user is encouraged to try to correct the interference by one or more of the following measures:

- Reorient or relocate the receiving antenna.
- Increase the separation between the equipment and receiver.
- Connect the equipment into an outlet on a circuit different from that to which the receiver is connected.
- Consult the dealer or an experienced radio/TV technician for help.

FCC Radiation Exposure Statement

This equipment complies with FCC radiation exposure limits set forth for an uncontrolled environment. This equipment should be installed and operated with minimum distance 20cm between the radiator & your body.

本產品符合國家通訊傳撥委員會 (NCC) 之規範

低功率電波輻射性電機管理辦法

第十二條 經型式認證合格之低功率射頻電機，非經許可，公司、商號或使用者均不得擅自變更頻率、加大功率或變更原設計之特性及功能。

第十四條 低功率射頻電機之使用不得影響飛航安全及干擾合法通信；經發現有干擾現象時，應改善至無干擾時方得繼續使用。前項合法通信，指依電信法規定作業之無線電通信。低功率射頻電機須忍受合法通信或工業、科學及醫療用電波輻射性電機設備之干擾。

RoHS Statement

This product is compliant to implemented RoHS (Restriction of Hazardous Substances) type regulations worldwide, including but not limited to China, India, Japan, Korea and European Union.

IC statement (for Canadian users)

This Class B digital apparatus complies with Canadian ICES-3 (B).

Cet appareil numérique de la classe A est conforme à la norme NMB-3(B) du Canada.

The device complies with RSS-210 of the Industry Canada Rules.

Operation is subject to the following two conditions (If the product within RF function):

- 1) this device may not cause interference and
- 2) this device must accept any interference, including interference that may cause undesired operation of the device.

Ce dispositif est conforme à la norme CNR-210 d'Industrie Canada applicable aux appareils radio exempts de licence. Son fonctionnement est sujet aux deux conditions suivantes: (1) le dispositif ne doit pas produire de brouillage préjudiciable, et (2) ce dispositif doit accepter tout brouillage reçu, y compris un brouillage susceptible de provoquer un fonctionnement indésirable.

DECLARATION OF CONFORMITY

The device complies with the requirements set out in the Council Directives on the Approximation of the Laws of the Member States relating Electromagnetic Compatibility (2014/30/EU) and Low Voltage Directive (2014/35/EU) and Radio Equipment Directive (2014/53/EU), the Restriction of The Use of Certain Hazardous Substances in Electrical And Electronic Equipment Directive (2011/65/EU), and Turkish EEE Directive.

WEEE

Disposal of Waste Electrical and Electronic Equipment and/or Battery by users in private households in the European Union



This symbol on the product or on the packaging indicates that this can not be disposed of as household waste. You must dispose of your waste equipment and/or battery by handling it over to the applicable take-back scheme for the recycling of electrical and electronic equipment and/or battery. For more information about recycling of this equipment and/or battery, please contact your city office, the shop where you purchased the equipment or your household waste disposal service. The recycling of materials will help to conserve natural resources and ensure that it is recycled in a manner that protects human health and environment.



Recycling information: See <http://www.benq.com/support/recycle> for details.

Radio Equipment Directive (RED)



BE	BG	CZ	DK	DE	EE	IE
EL	ES	FR	HR	IT	CY	LV
LT	LU	HU	MT	NL	AT	PL
PT	RO	SI	SK	FI	SE	UK

Operating Frequency	2.4G	5G
Frequency Band	2.412-2.472GHz	5.150-5.250GHz
Maximum Output Power	11b: < 13dBm	11a: < 12dBm
	11g: < 13dBm	11ac(HT20/HT40): < 11dBm
	11n(HT20/HT40): < 12dBm	

BenQ.com

© 2017 BenQ Corporation

All rights reserved. Rights of modification reserved.

4J.JH301.001 2017/5/17 C