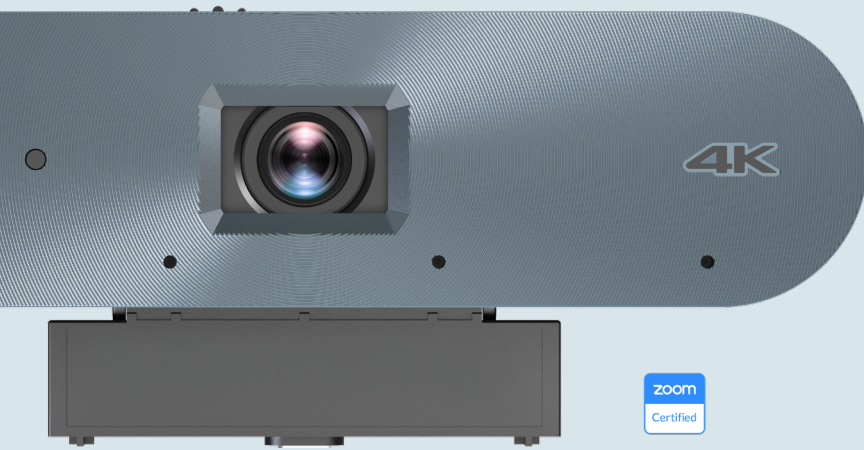


BenQ

DV01K

AI Smart 4K BenQ Board Camera



Precisely calibrated for the BenQ Boards RP04 and RM04, the DV01K comes with a high-performance **Sony image sensor** that enhances image quality and lets you capture videos in 4K UHD clarity.



The DV01K has **four built-in omnidirectional microphones** that can pick up sound from up to 8 metres away, ensuring that the speakers can be heard no matter where they're seated in the room.



With AI-powered **active noise cancellation**, remote participants on video calls can easily identify who's speaking and clearly hear what they're saying even in a busy classroom.



For sessions in which teachers and students require everyone's full attention, the DV01K's **AI auto framing and voice tracking** features keep them the main focus of the video while they're speaking.

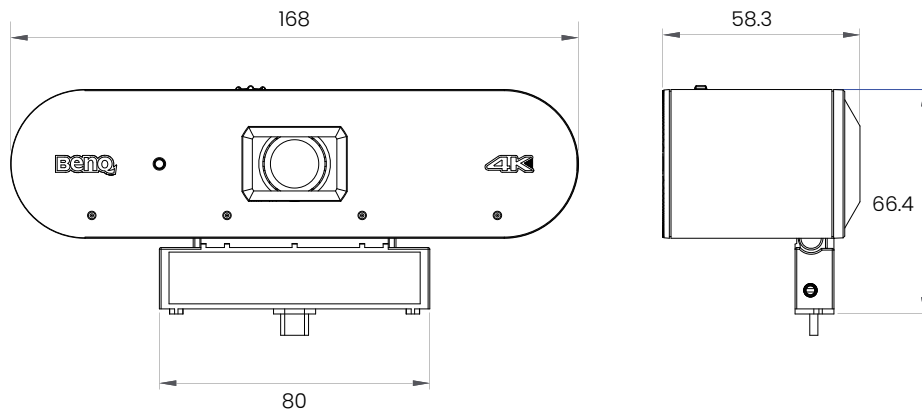


The **USB-C connector** eliminates the need for additional cables that could potentially get snagged and cause the camera to shift or topple over.

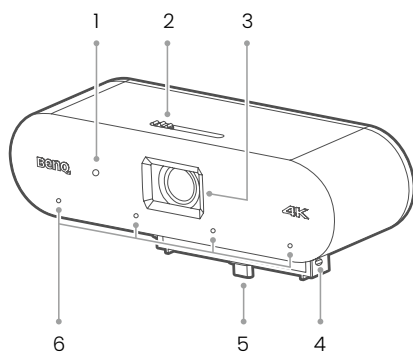
Camera	Sensor	Sony 4K UHD
	Effective pixels	16:9, 8.29MP
	Resolution	4K@30fps, 1080p@60 fps, 720p@60 fps
	Field of view	Horizontal: 110°, Vertical: 70°, Diagonal: 120°
	ePTZ	Digital zoom x 4
	Focus	Fixed
	Lens type	Glass
	Low light performance	0.01 Lux
	AI auto framing	Yes
	AI voice tracking	Yes
	Privacy cover	Yes
	DNR	2D & 3D DNR
	SNR	>45dB
Audio	Microphone	Omnidirectional mics x 4
	Pickup distance	Up to 8m
	AI active noise cancellation	Yes
Video	Output	USB 2.0 Type-C
	Compression format	H.264, H.265, MJPEG, YUY2
Power	Input voltage	DC 5V
	Input current (max.)	1A
	Power consumption (max.)	5W
Compatibility	Operation systems	Windows 7 (1080P/720P), Windows 8.1, Windows 10, Windows 11, macOS™ 10 & higher, Linux (UVC), Chrome™ OS Version 29.0.1547.70 & higher
	USB	Plug and play
Mechanical	Dimensions (W x H x D)	168.0 x 71.9 x 58.3mm
	Weight	0.30kg
	Built-in mount & screws*	Yes

* Designed for the BenQ Boards RP04 and RM04: just tighten the screws for a secure and stable installation.

DIMENSIONS (MM)

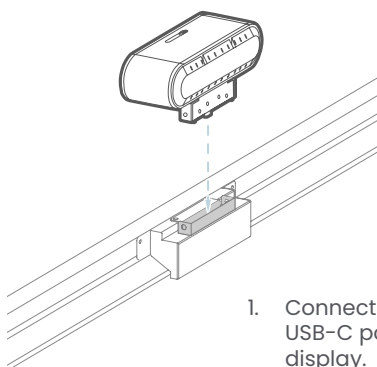


PRODUCT INTERFACE

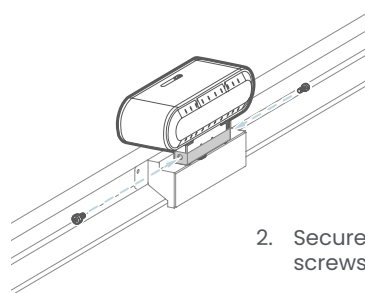


1. Light sensor (lights up blue when the camera is switched on)
2. Privacy cover
3. Fixed focal length lens
4. Screw hole
5. USB-C connector
6. Omnidirectional microphones

CAMERA INSTALLATION



1. Connect your camera to the USB-C port on the top of the display.



2. Secure the camera using the screws supplied.

BenQ

© 2024 BenQ Corp. Specifications may vary by region, please visit your local stores for details. Actual product's features and specifications are subject to change without notice. This material may include corporate names, trademarks and logos of third parties which are the properties of the third parties respectively.



www.benq.eu/en-eu/education.html