

Inspire the now, **teach the future**

Education Solutions from BenQ 2021





Stegosaurus

157-145 mya



Length ~ 4,5-9
Height ~ 2-4 m
Weight ~ 5-7 t

Education Solutions
from BenQ 2021

Interactive experiences
Immersive environments
Engaging information

- Education solutions.....4
- Projection.....6
- Interactive flat panels.....10
- InstaShow™ wireless presentation solution13
- Digital signage.....14
- Healthcare in the classroom16
- Software solutions.....18
- Projector specifications.....24
- IFP comparison25
- IFP & digital signage specifications.....26

BenQ Education Solutions

World-renowned for its educational technology solutions, which include interactive flat panel displays, projectors and collaboration devices.



For remote teaching
EZWrite Live
Page 21



For the IT office onsite & offsite:
Software - DMS / AMS
Page 23



For the school hall
LU9245W
Page 8



For corridors
Digital signage
Page 14

For primary classrooms
MH856UST+ &
Interactive Flat Panel
Page 10 & 7



For the library
Digital signage
Page 16



For the dinner hall
Digital signage
with X Sign
Page 15 & 19



For the auditorium
MH760
Page 9



For secondary classrooms
Interactive flat panel
Page 12

Projection solutions



Stegosaurus

Late Jurassic Period ~ 157-1



Clade: Dinosauria
Ceratopsia
Stegosauridae

The latest projection technology from BenQ is breathing new life into legacy projection systems, transforming existing environments into new learning hubs.

For small spaces and big ideas...



MW862ST



Smaller classrooms can restrict technology usage, but with a short-throw projector a big picture can be achieved in a small space with no interruption to the image when the teacher presents at the front of the room.

The MW862ST short throw projector provides a 16:10 aspect ratio with an interactive whiteboard system projector upgrade and reduces shadows thanks to a throw distance of less than one metre. Operating via the BenQ Eco Cycle System, the MW862ST eliminates electricity waste and reduces power-up wait time, offering significant money-saving and replacement costs.

Features

- WXGA resolution
- Brightness 3600 Lumens
- Short Throw Projector
- BenQ Eco Cycle System - Standby Mode, Auto Power, SmartEco™ Mode
- Built-in 10W speaker

MH856UST+



For throw-distances less than 0.5 metres, the MH856UST+ Ultra-short throw projector provides up to a 100" image for front of class teaching.

With optional pen and touch interactivity, the MH856UST+ features PointWrite technology for learning on any flat surface to create new learning opportunities within the classroom.

Features

- Brightness 3500 Lumens
- Ultra-Short Throw Projector
- Compatible with network control via LAN
- Built-in 10W speaker

For **clarity** right to the
back of the room



For **interactivity** that
brings lessons to life



LU9245W



Large space

At 7000 ANSI-lumens, the LU9245W is the brightest screen choice for large venue applications, including assembly halls, lecture theatres and gymnasiums.

Featuring BenQ's BlueCore laser engine, it delivers superior colour performance through a dual colour wheel system, support for 360° and portrait installation, and 24/7 operation with dramatically improved durability for diverse application opportunities.

Features

- High brightness 7,000 ANSI Lumens
- Bluecore laser light source
- Rec.709 colour space 96%
- WUGXA resolution
- 7 lens options
- Lens shift
- 50" - 500" image
- 2 x HDMI
- HDBaseT
- Warranty 5 year / 20,000hrs

LH890UST



Interactive

Combining interactive and BlueCore laser technology, the LH890UST encourages student participation and active learning with the power of touch.

The ultra-short throw projector produces large-scale uninterrupted high-quality pictures when mounted just inches from a wall, eliminating shadows and glare.

Features

- Ultra-short throw
- 1080P resolution
- BlueCore laser technology
- Industry-leading dust proof design: BenQ Dust Guard™
- 4000 ANSI Lumen high brightness
- 10,000:1 high native contrast for crisp readability
- PointWrite pen and touch interactivity kit (option)

For high **brightness** and high **resolution**



MH760



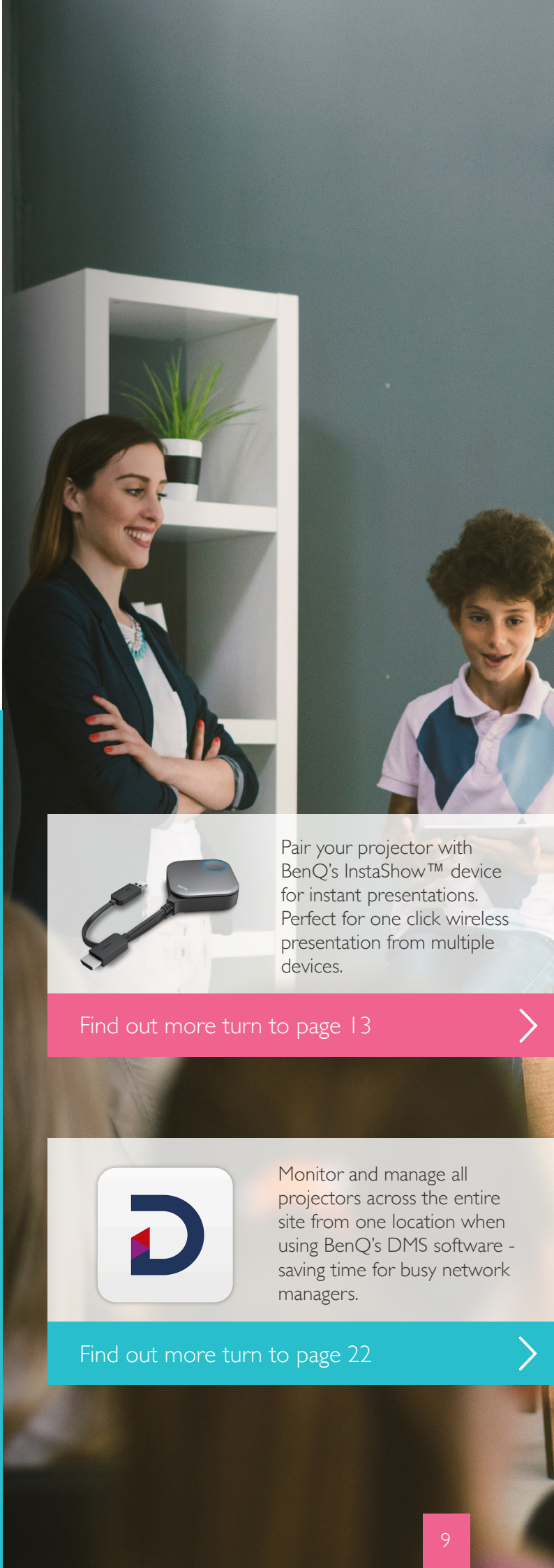
High brightness

Fresh air and natural light is an important factor for maintaining attention, therefore the MH760 is the perfect solution for ambient rooms.

Featuring a brightness of 5000 ANSI lumens and Full HD resolution, image reproduction and clarity is superb even when the blinds are left open.

Features

- High brightness 5,000 ANSI Lumens
- Full HD 1080p resolution
- 60" - 180" image size
- Speakers 2 x 10W
- HDMI x2



Pair your projector with BenQ's InstaShow™ device for instant presentations. Perfect for one click wireless presentation from multiple devices.

Find out more turn to page 13



Monitor and manage all projectors across the entire site from one location when using BenQ's DMS software - saving time for busy network managers.

Find out more turn to page 22



Interactive Flat Panels



Front of classroom teaching aids are evolving and a new generation of classroom displays are emerging. Teachers now have the power to annotate, collaborate, stream content, download and upload documents to the cloud, all from one device and at the touch of their fingers.

Specifically designed for education, BenQ's portfolio of Interactive Flat Panels (IFPs) are reshaping the future of learning. By combining resilient hardware with intelligent software and a user friendly interface, BenQ's interactive flat panels are a classroom ready solution which encourages a truly collaborative and inspiring learning experience for teachers and students of all ages.

Remote administration and security

IT managers and administrators have the freedom to manage and maintain the BenQ IFPs from a remote location. The system provides an efficient and convenient way of managing accounts on BenQ IFPs and provides personal workspaces to each member of staff, which can be accessed from the cloud.

RM Series

55" (RM5502K) 65" (RM6502K) 75" (RM7502K) 86" (RM8602K)



Introducing the new RM Series

The BenQ RM Series is bursting with feature to make collaborative learning even easier. Such as EZWrite software for classroom and remote teaching, Account Management System (AMS) for personalised settings at the touch of a card, and new presenting and collaboration tools.



New

EZWrite software

Leading interactive and collaborative technology to liven up learning with cross-platform access from any display or mobile device. Easily share ideas, notes and opinions by annotating on the same whiteboards from anywhere.



New

AMS cloud storage

BenQ's Account Management System (AMS) provides personalised workspaces that can be accessed by a simple QR code login giving teachers and lecturers quick access to teaching materials.



InstaShare wireless collaboration software

Share content from any device using BenQ's InstaShare collaboration software. The screen can be split to allow up to nine students to participate from anywhere in the room.



Smart Eye-Care solution

The Smart Eye-Care solution functions intuitively for a smooth and comfortable viewing experience. The BenQ Education IFP will automatically activate Flicker-Free and Low Blue Light features by detecting the movement of users close to the screen.

X-sign Broadcast

This easy-to-use content creation and communication program can broadcast the school logo, parents evening information or emergency updates to one or more of the BenQ Premium Series displays at the click of a button. Share local or cloud based content - text, images, video, office files, YouTube and more.



Kahoot!

With Kahoot!, teachers can instantly create polls, learning games, and team competitions to keep students engaged and focused. Available on every BenQ interactive display through the BenQ Suggests app store.



BenQ TÜV-certified
Low Blue Light Technology



BenQ TÜV-certified
Flicker-Free Technology



BenQ Anti-Glare
Display Technology

New

4K Android OS • Voice control

Includes

Wall bracket • Remote control • Pens



Oak National Academy Resources

Access over 10,000 resources including videos, lesson slides, and worksheets directly from the Android application in the BenQ Suggests store. Make real-time annotations and collaborate via the floating tool.

Features

- 4K resolution
- 20-point multi-touch
- 32GB storage
- 2 x 16W speakers
- Multiple connectivity inputs
- Low power consumption
- Cross-platform agnostic
- WiFi compatible
- EZWrite software

Additional benefits

- 3 year warranty (5 years on 65", 75", 86")*
- Training
- Service and support

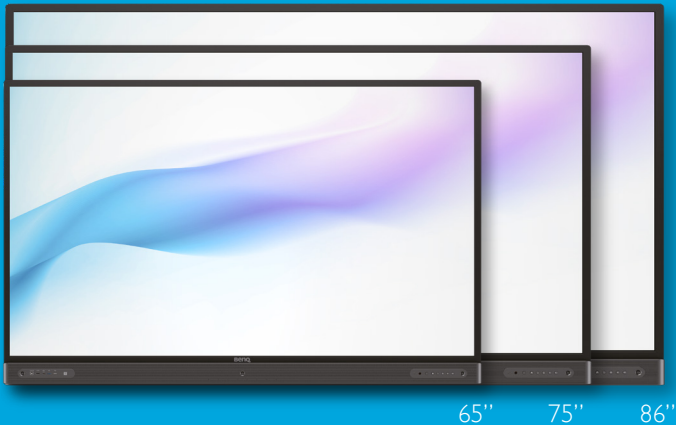
*On registration

RP Series

65" (RP6502)

75" (RP7502)

86" (RP8602)



Hassle-free learning experiences

For education institutions looking for an interactive flat panel with advanced features, the premium RP Series from BenQ creates an engaging and hassle-free learning experience, with the added reassurance of monitoring a healthy environment. Featuring all the benefits of BenQ's exclusive software for collaborative learning environments, the RP Series incorporates BenQ's HealthCare+ technology for education.



NFC Cards

Provide hassle-free access to IFPs with NFC cards. Using staff ID cards or OAuth technology to embed personal data into NFC cards, login occurs automatically when presented against the screen sensor and instantly loads personalised workspaces.



Handwriting Recognition with Fine IR Plus

Zero Bonded technology and Fine IR Plus, ensure the most natural handwriting experience and character recognition ever.



X-Sign Broadcast

This easy-to-use content creation and communication programme can broadcast the school logo, parents evening information or emergency updates to one or more of the BenQ Premium Series displays at the click of a button.



DMS (Device Management Solution)

Control service updates and device management across single or multiple displays from a remote location via a local network or the Cloud.



Healthcare+ for education

BenQ's exclusive HealthCare+ technology intelligently monitors the air quality of its environment using an Air Quality Sensor, alerting the teacher to any important changes in the classroom environment. It features a Germ-Resistant Screen to instantly kill germs on the screen surface and protects the eyes of its viewers with its Smart Eye-Care solution.

Air Quality Sensor



Germ-Resistant



Smart Eye-Care Solution



Oak National Academy Resources

Access over 10,000 resources including videos, lesson slides, and worksheets directly from the Android application in the BenQ Suggests store. Make real-time annotations and collaborate via the floating tool.

Includes

Wall bracket • Remote control • Pens

Features

- 4K resolution
- Storage
- 20-point multi-touch
- NFC card reader
- Wall bracket
- Remote control
- Multiple connectivity inputs
- 2x 16W speakers
- 15w subwoofer
- WiFi compatible
- Low power consumption
- HealthCare+
- EZWrite software
- EZWrite Live
- Free Oktopus License
- InstaShare compatible
- Intelligent handwriting
- Floating toolbar
- Tool box: (Incl: Calculator, Geometry, Timer & Stopwatch, Draw Lots, Score Board, Buzzer)
- MS Office compatibility
- Data-to-Go
- Video recording
- Cross platform agnostic
- AMS
- DMS
- Training
- Service and support
- 5 year warranty on registration

InstaShow™ Plug & Play Wireless Presentation Solution



Sharing great ideas is a click away

Connectivity compatibility, missing wires, security threats and time consuming set-up can often result in a lack of collaboration. BenQ has removed these frustrations with its InstaShow™ series by removing software downloads, building in high-speed WiFi to the device, offering a range of connectivity and trustworthy security protection.

Utilise InstaShow™ for lecture rooms, assembly halls or gymnasium technology to transform these spaces and save costs on additional wiring.

Future-proofed for tomorrow's interactive lessons and meetings, the InstaShow™ WDC20 is compatible with any OS or hardware platform, going beyond PC/laptop compatibility to support any iOS or Android mobile device.

Operating on 802.11ac high-speed WiFi with automatic channel selection, InstaShow™ ensures fast, secure wireless connections to the display by simply plugging into the HDMI and USB ports of the laptop. Starting presenting wirelessly at the touch of a button with no downloads. The InstaShow™ features trustworthy security protection with AES 128-bit security encryption and WPA2 authentication protocol.

Hardware



WDC10

- Connects up to 16 buttons simultaneously
- HDMI + USB cable connectivity



WDC20

- Connects up to 32 buttons simultaneously
- USB & HDMI cable compatibility
- Active split-screen collaboration for up to nine devices presenting at once
- Compatible with InstaShare app, available for Android and iOS devices

InstaShare Software

Encouraging use of personal devices without connectivity ports, the InstaShare software is compatible with PCs, tablets, and smartphones enabling users to mirror, annotate and save digital content onto front-of-class display technology.

Features

Hardware - WDC10 & WDC20

- AES 128-bit security encryption
- WPA2 authentication protocol
- True plug & play
- 'No driver software' for buttons
- Trustworthy Security Protection
- InstaVideo
- Auto channel search
- Wireless 802.11ac
- Video & audio sharing

- Assured performance
- Extended users
- Simple pairing
- Optimal intelligent resolution matching

InstaShare Software

- Two-way mirroring
- Two-way touch control
- 9 split screen presenting
- Central control

Digital Signage



Wayfinding, digital menu, and information boards are vital for rapid messaging in academic spaces, improving communication and efficiency across the campus. BenQ offers a digital signage portfolio to cater for educational facilities of all shapes and sizes.

Digital menus



Features

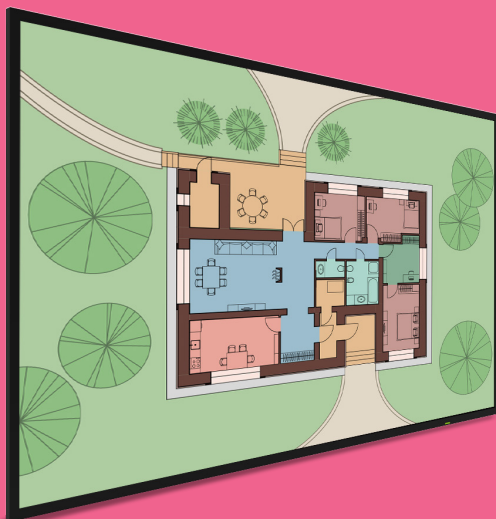
- High brightness at 1000 nits
- Unique formation
- DMS compatible
- Plug-and-play
- 24/7 non-stop operation

BH280 I

The unique long-structure of the BH280 I bar-type display is specially designed to encourage signage in areas restricted in space. Crafted with an exquisite 28" stretched screen, the BH280 I can be seamlessly integrated into small and narrow spaces in portrait or landscape orientation.

The BH280 I's ultra-bright 1000 nit screen ensures images remain sharp and crisp even under ambient light. Moreover, the BH280 I also features internal speakers and USB plug-and-play support, so you can deliver impactful audiovisual messages in compact spaces with minimal installation.

Information boards



Features

- Quick content creation
- Over 140 built-in templates
- 4K resolution
- Centralised control
- USB, LAN & Cloud content distribution options
- Built-in Android media player

ST4302

Transform your school information boards with the 43" 4K ST4302. Its built-in Android media player, combined with BenQ's exclusive X-Sign and DMS software, provides the perfect solution for quick content creation and distribution.

Connect to the site network and use BenQ's X-Sign content creation software programme to create, manage and schedule content.

BenQ's signage solutions feature its exclusive X-Sign software for content creation, sending messages, alerts and media to all your screens simultaneously and remotely. **Find out more on page 22**

HealthCare+

Wellbeing for education

Air Quality Sensor

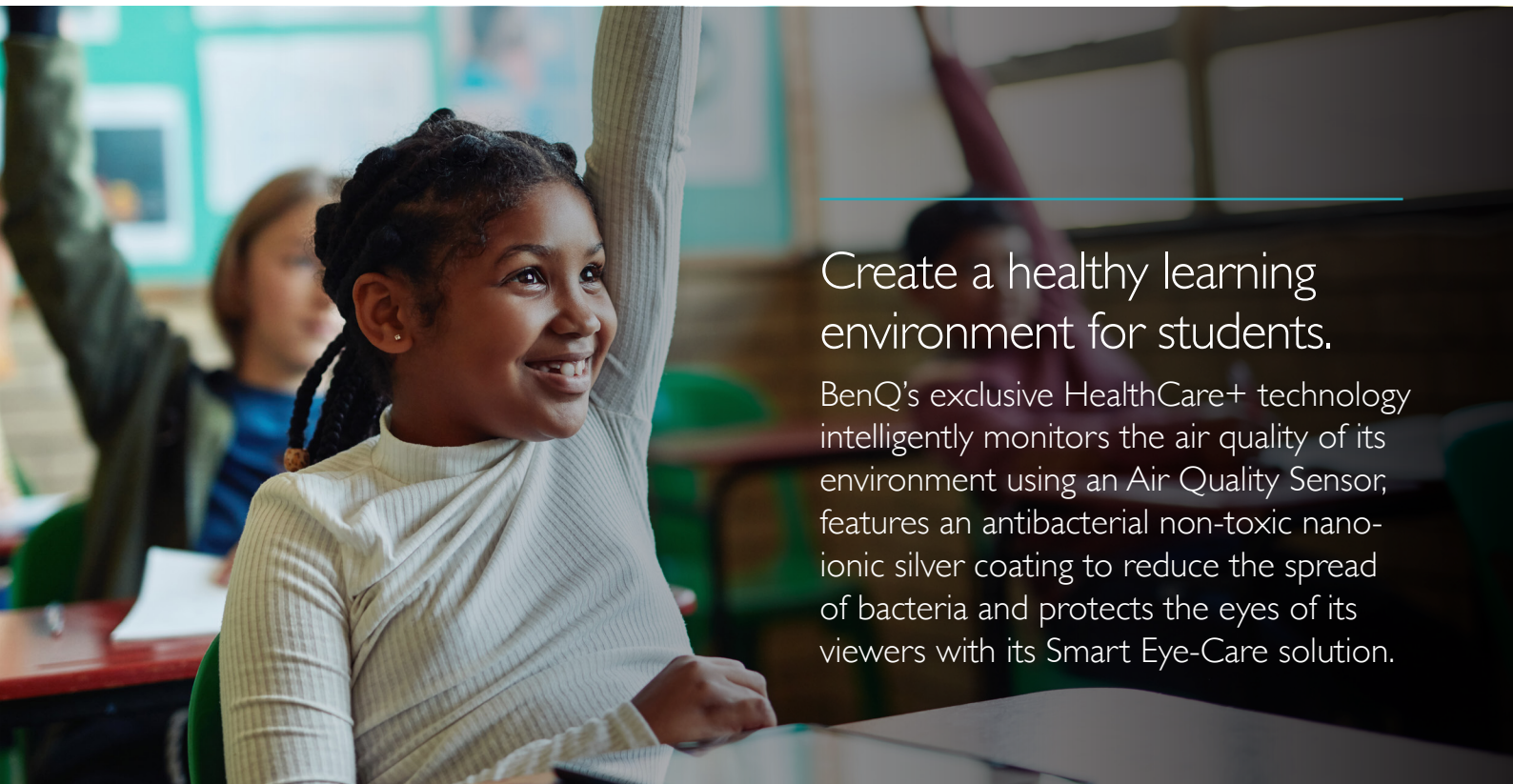


CO₂ Level Indicator Inside

Antibacterial



Smart Eye-Care Solution



Create a healthy learning environment for students.

BenQ's exclusive HealthCare+ technology intelligently monitors the air quality of its environment using an Air Quality Sensor; features an antibacterial non-toxic nano-ionic silver coating to reduce the spread of bacteria and protects the eyes of its viewers with its Smart Eye-Care solution.

Fresh air for fresh minds

BenQ Air Quality Sensors provide real-time data on key environmental parameters by detecting temperature, humidity, and monitoring PM 2.5 and CO₂ concentration levels. The sensors remind teachers to adopt necessary mechanisms to keep the environment at an ideal status, ensuring that students remain highly focussed, while enjoying a much healthier learning environment.





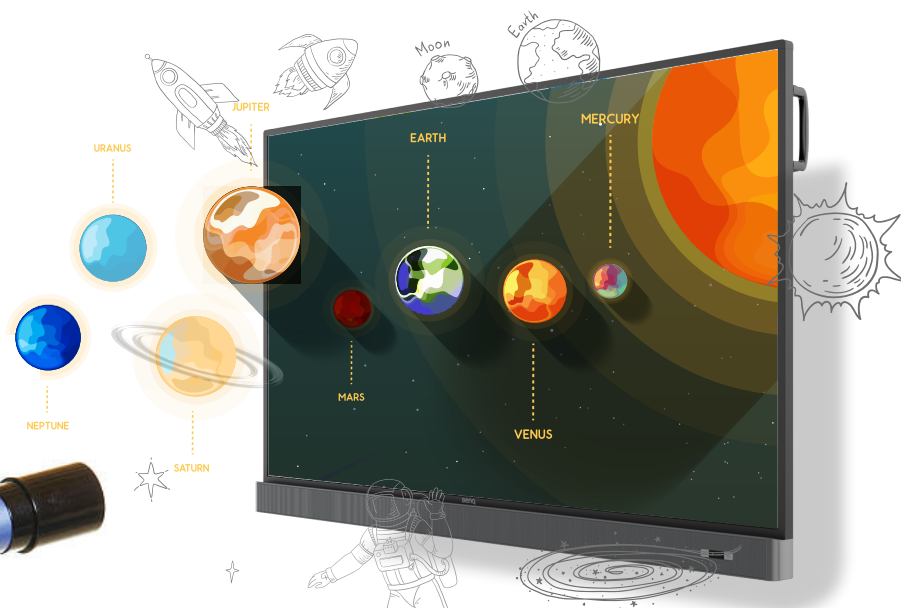
Ensure the learning is contagious

An antibacterial, non-toxic, nano-ionic silver coating prevents the spread of bacteria, blocking the spread of germs. So rest assured that however hands-on the lesson, knowledge will be the only takeaway.



Eye-care because you care

Flicker-Free, Low Blue Light and Anti-Glare technologies combine with motion sensors, which automatically adjust display settings for optimum eye comfort, as part of the Smart Eye-Care Solution from BenQ.



Exclusive BenQ Software



BenQ's exclusive software is designed to help teachers and IT professionals keep learning sessions engaging and safe. With the help of remote facilities, single or multiple displays can be monitored, maintained and sent updates, as well as providing lecturers and teachers with hassle-free access to documents and files saved on the cloud.

X-Sign & X-Sign Broadcast

Hassle-free content creation, scheduling and management software

Communication is key to ensuring the successful operation of any campus. By removing the complexity from sending messages, the BenQ X-Sign software range is designed to improve communication by wirelessly broadcasting announcements directly to your display technology.

Built into BenQ's display panels, the software lets you create, manage and broadcast classroom content, digital menu boards, wayfinding and emergency alerts from any device. Creating an engaging and safe learning environment has never been easier.



X-Sign Broadcast



Integrated into BenQ's interactive flat panel displays.



Send scrolling text or full screen alerts
Send informative ticketing alerts across the top and bottom of the screen, or as full screen messages.



Access and share saved content
Easily share content that's stored either locally or in the cloud, with support for text, images, videos, office files, YouTube and more.

Featured in X-Sign Broadcast and X-Sign

- Free software
- Easy-to-manage system
- Multimedia support
- Access from any Android smart device or X-Sign-compatible display
- Send messages in an instant
- Schedule messages
- Cloud or LAN connectivity
- Remote management
- Single or multiple display grouping function
- Administrator management
- Time saving

X-Sign



Integrated into BenQ's digital signage solutions.



X-Sign Player
Playback software built into every BenQ digital signage display.



140 templates
Design your own content or choose and modify from over 140 layout templates, ensuring personalised content is delivered across your establishment.

Multimedia support

X-Sign makes it easy to share content that's stored either locally or in the cloud, with support for text, images, videos, office files, YouTube and more.



Google Docs



OneDrive



YouTube

EZWrite

The ultimate BenQ digital whiteboard software



For in lesson collaboration, BenQ's EZWrite software streamlines classroom discussions, enabling academics and students to easily share ideas, notes and opinions as if they are annotating on the same whiteboard, regardless of where they are.

With cloud storage and collaboration tools, EZWrite offers a plethora of teaching tools that will help every class go smoothly and create a better learning environment.



Teaching assistance

Whiteboarding, cloud brainstorming tools and sticky notes encourage collaboration and makes it easy for students to collect, categorise, edit and share notes between the display and mobile devices.



Instant access to the cloud

Real-time annotation enables teachers and students to interact simultaneously.



Google Drive



OneDrive



Dropbox



Floating toolbar

Floating Tool lets academics easily switch between a wide variety of writing tools, make notes and draw directly on top of any source, app, image, document or video.



Sticky notes



Palm eraser



Screen capture



Screen record



Personalised background



Brush mode

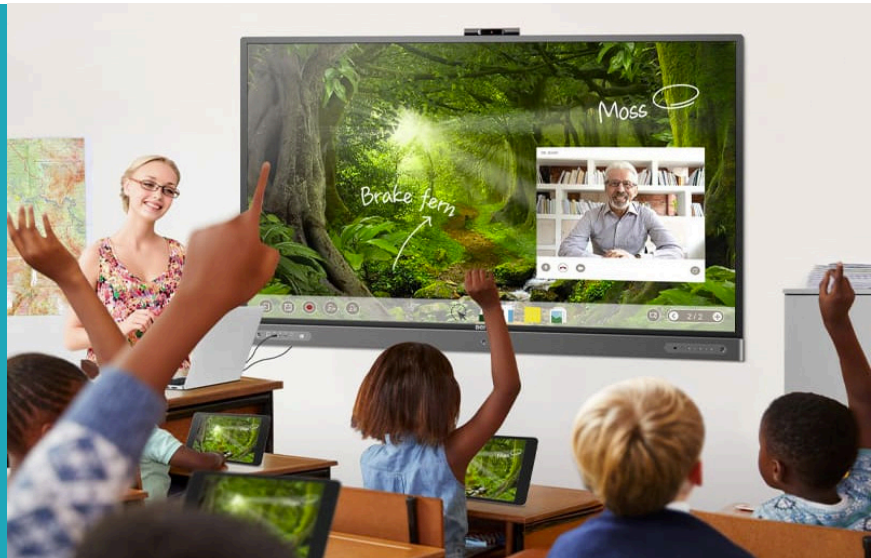


Handwriting recognition



Bridging the gap between the classroom and learning remotely

Enabling academics to connect with up to 32 students in remote locations from personal devices in real-time. Requiring no download or installation, EZWrite is a cloud based software compatible with any device using Chrome, Firefox or Safari web browsers.



Real-time cloud whiteboard

Share documents and mixed media instantly and encourage group annotation from tablets, desktop computers, laptops and mobile devices from a secure workspace.



Real-time annotation

Real-time annotation enables teachers and students to interact simultaneously.



Present using video conferencing

With integrated video conferencing facilities, the sessions simulates the classroom experience, further boosting interactivity.



Record sessions

Record the collaborative sessions to use again and again.



Access existing whiteboards

Pick up where you left off on the last session by loading existing whiteboards.



Use templates

Choose from 15 pre-installed templates or customise your own to suit your needs.



Zero cost

Free web based software installation



Cross-platform

Windows, Mac, iOS, Android supported

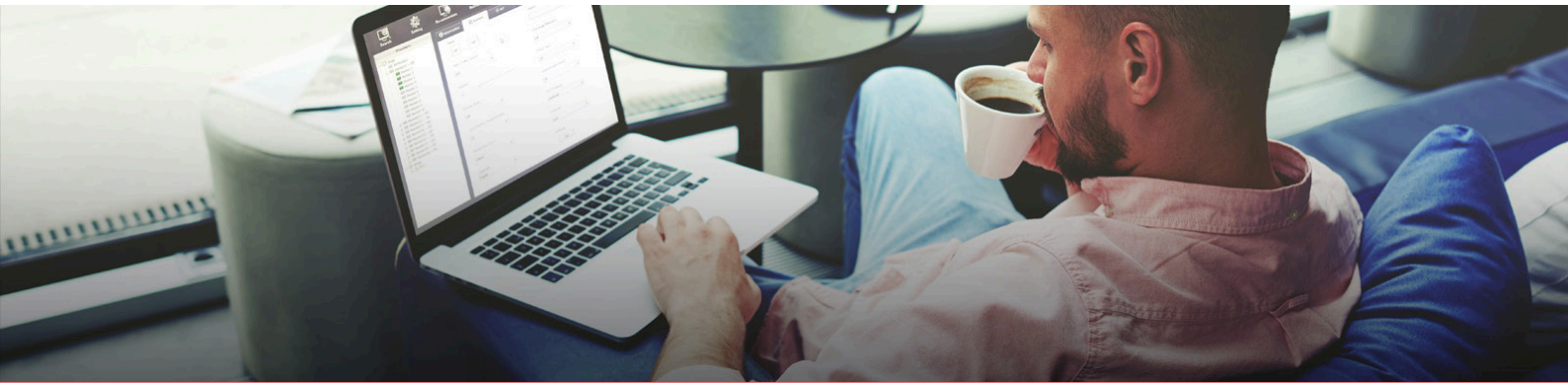


Admin control

Admin settings lets teachers take control of the class by turning on/off students' editing-access of the cloud whiteboard.

DMS (Device Management Solution)

A comprehensive management tool



BenQ's exclusive management support system leaves IT departments and school administrators feeling confident knowing their technology, staff and students can be safely monitored onsite or from afar.



Power On/Off



Monitor



Cross-Subnet device control



Task management



Monitor power consumption



Customised command



Identification



BenQ offers two free DMS formats; DMS Local and DMS Cloud

DMS Local

DMS Local enables remote and centralised management of multiple displays by IT administrators/technicians via a local network.

DMS Cloud

For network managers looking after multiple sites, DMS Cloud lets you control, maintain and service all displays from a remote offsite location via a web browser interface.

AMS (Account Management Solution)

Effortless control over user profiles



The Account Management System (AMS) from BenQ allows teachers and lecturers to move freely between classrooms and have hassle-free access to personal documents and settings from any from any BenQ Interactive Flat Panel onsite.



Easy set up

Personal preferences including home screen layout, shortcuts, and app settings can be set within the AMS software, which then loads instantly every time you access your work spaces from any AMS enabled IFP in your establishment, giving true follow me personalisation of your class display.



Pair cloud storage accounts

AMS also lets you pair personal cloud storage to gain access to saved files



NFC cards

Provide hassle-free access to IFPs with just a touch of an NFC card* or compatible staff ID cards.

*RP Series only



IT / Administration

Additionally, AMS also provides an effortless way for IT staff to create and manage AMS accounts taking ease of classroom display management to a whole new level.



Projector Specification

Model	MW632ST	MH856UST+	LU9245W	LH890UST	MH760
Technology	DLP Dark Chip 3	DLP Dark Chip 3	DLP Dark Chip 3	DLP Dark Chip 3	DLP Dark Chip 3
Resolution	WXGA 1280x800	Full HD (1920x1080)	WUXGA (1920x1200)	FullHD (1920x1080)	Full HD (1920 x 1080)
Brightness	3,200 Lumens UHP	3,500 Lumens UHP	7,000 Lumens Laser	4,000 Lumens Laser	5,000 Lumens UHP
Contrast ratio	13,000:1	10,000:1	3,000,000:1	3,000,000:1	3,000:1
Throw ratio	0.72-0.87	0.33 : 1	Optional lens	0.23 : 1	1.15-1.5
Zoom ratio	1.2x	Fixed	Optional lens	Fixed	1.3x
Lens shift	-	Vertical (+/-4%)	Horizontal/Vertical Manual	-	Vertical Manual
Noise level(Normal/Eco mode)	33/28 dBA	34/29 dBA	36/34 dBA (eco)	35/32 dBA	36/33 dBA
Light source life (hours)	10,000 hours (LampSave) 6,500 hours (Economic) 6,000 hours (SmartEco) 4,500 hours (Normal)	12,000 hours (LampSave) 10,000 hours (SmartEco) 8,000 hours (Economic) 5,000 hours (Normal)	Laser 20,000 hours (Normal)	Laser 20,000 hours (Normal)	4,500 hours (SmartEco) 3,500 hours (Economic) 2,500 hours (Normal)
Speaker	10W x 1	10W x 2	10W x 2	10W x 1	10W x1
Resolution supported	Up to UXGA (1600 x 1200)	Up to WUXGA_RB (1920 x 1200)	Up to WUXGA_RB (1920 x 1200)	Up to WUXGA_RB (1920 x 1200)	Up to WUXGA_RB (1920 x 1200)
Input connectivity	1 x D-sub 15 (Sharing Component), 1x USB Type A (power supply 1.5 A), Mini USB Type B (maintenance+)	2 x D-sub 15 (Sharing Component), 1x USB Type B (maintenance), 1 x Mini USB Type B (Point Write + page front/back), 1 x USB Type A (5V/2A power supply)	2 x D-Sub 15, 1 DVI-D (HDCP), 1 x RGBHV (compatible YUV), 1 x HD Base T seperated from LAN, 1 x USB Type A (power supply WIDI Compliant), 1 x USB Type B (maintenance)	1 x D-sub 15, 2 x Mini USB Type B (Point Write + maintenance), 1 x USB Type A (5V/1.5A power supply), WIFI Ready	1 x D-Sub 15, 1 x USB Type A (power supply 1.5 A), Mini USB Type B (maintenance+ page front/back)
Output connectivity	1 x RCA, 1 x S-Video, 2x HDMI (1.4a) including 1 MHL	1xRCA, 1x S-Video, 2 x HDMI 1.4 (1 MHL)	2 x HDMI 1.4 (including 1 MHL), 1 x composite (RCA)	1 x RCA, 1 x S-Video, 2x HDMI 1.4 (1 x MHL)	1 x RCA, 1 x S-Video, 2x HDMI 1.4 (1 MHL)
Audio input	1 x mini jack 3.5, 1x RCA (L/R)	1 x mini jack 3.5, 1x RCA (L/R)	1 x mini jack 3.5, 2x RCA (L/R)	1 x mini jack 3.5, 1x RCA (L/R)	1 x mini jack 3.5, 1 x RCA (L/R)
Audio output	1 x mini jack 3.5	1 x mini jack 3.5	1 x mini jack 3.5	1 x mini jack 3.5	1 x mini jack 3.5
Communication port	RS232 (DB-9pin)	LAN Control x 1 (Sharing component) Crestron eControl and Crestron RoomView, AMX Device Discovery - RS232 (DB -9pin)	LAN Control x 1 not share with HD Base T, Crestron e-control and Crestron RoomView, PJ Link - 2 x RS232 (DB-9pin) In/Out - Trigger 12V (Mini Jack 3.5) - 2 x wired remote control In/Out	LAN Control x 1 (Sharing component) Crestron eControl and Crestron RoomView, AMX Device Discovery - RS232 (DB-9pin)	LAN Control x 1 (Sharing component) Crestron eControl and Crestron RoomView, AMX Device Discovery - RS232 (DB-9pin) - Trigger 12V (Mini Jack 3.5)
Dimensions (WxHxD)	287 x 114 x 233 mm	287.5 x 206.9 x 373.3 mm (with mirror) / 287.5 x 130.2x 373.3 mm (without mirror)	525 x 216 x 470 mm	400 x 164 x 502 mm	411.4 x 118.4 x 267.5 mm
Weight	2.6 Kg	5 kg	24 Kg	9.06 kg	4.9 Kg
Power consumption (Normal)	305W	320W	600W	358W	500W
Lamp part number	5J,J9V05.001	5JJD05.001	No lamp laser light source	No lamp laser light source	5J,JFG05.001
Other features	HDMI Signal Power On ±30° Vertical Keystone SmartEco Technology 3D Ready <0.5W Low Standby Power Consumption	HDMI Signal Power On SmartEco Technology 2D Keystone and Corner fit Optional Driver Free Interactive Supplied wall mount <2W Network Standby Power	7 Optional Lenses 360 ° projection and 24/7 2D Keystone and Corner fit Digital Shrink 3D Ready <2W Network Standby Power	HDMI Signal Power On SmartEco Technology 2D Keystone Corner fit Optional Driver Free Interactive Supplied wall mount <2W Network Standby Power	2D Keystone and Corner fit SmartEco Technology 3D Ready <2W Network Standby Power
Optional accessories	Instashow, QCAST wireless Dongle, FULL HD Adapter, Carrying bag, 3D Glasses DGD5, PSR01 Presentation Plus	Instashow, QCAST wireless Dongle, FULL HD Adapter, Interactive Kit PW30U, PT20 Touch Laser Curtain, PSR01 Presentation Plus, 3D	InstaShow, 7 Manual lamps, QCAST wireless Dongle, FULL HD Adapter, 3D Glasses DGD5, PSR01 Presentation Plus, Also in white color model	Instashow, QCAST wireless Dongle, FULL HD Adapter, Interactive Kit PW40U, PT12 Touch Laser Curtain, PSR01 Presentation Plus, 3D Glasses DGD5	Instashow, QCAST wireless Dongle, FULL HD Adapter, 3D Glasses DGD5, PSR01 Presentation Plus

Interactive Display Comparison



Range	RM Series	RP Series
Sizes (inches)	55, 65, 75, 86	65, 75, 86
Resolution	4K UHD (3840x2160)	4K UHD (3840x2160)
Interactive Technology	Fine IR Plus	Fine IR Plus
Touch Points (max)	20	20
Anti-Glare	AG75	AG80
Tempered Glass (Thickness Mohs scale)	3-4mm 7H	4mm 7H
Germ-Resistant Screen *	✓	✓
Internal Speaker	16Wx2	16Wx2
InstaShare	✓	✓
AMS	✓	✓
Saffi (voice control)	✓	✓
NFC Reader	✗	✓
DMS	✓	✓
X-Sign Broadcast	✓	✓
Wall Mount Included	✓	✓
Annotation APP	EZWrite software	EZWrite software
Eye-Care	✓	✓
CO2 Sensor	✗	✓
Warranty	3 years de/re-install*	5 years de/re-install**
Oktopus licence	✓	✓
EZWrite Live compatibility	✗	✓
Remote control - freeze/blank	✓	✓
Pens	✓	✓
Wifi Connectivity***	✓	✓
OPS	✓	✓

* Part number dependent

** FOC warranty upgrade to 5 years on 65", 75" & 86" if registered within 30 days of purchase

*** Dongle purchase required

IFP Specification

RE Series

RM Series

Model	RE750I	RM5502K	RM6502K	RM7502K	RM8602K
Screen Size	75"	55"	65"	75"	86"
Resolution	3840 x 2160	3840 x 2160	3840 x 2160	3840 x 2160	3840 x 2160
Brightness (Typ.)	550	350	350	350	350
Contrast Ratio (Typ.)	1200:1	5000 : 1	1200 : 1	1100 : 1	1100 : 1
Viewing Angle (H/V)	178 / 178	178 / 178	178 / 178	178 / 178	178 / 178
Response Time (G-t-G)	<10ms	8.5 ms	8.5 ms	8 ms	8.5 ms
Backlight Life (hrs)	50000	30,000	30,000	30,000	30,000
Operating Hour	18/7	18 / 7	18 / 7	18 / 7	18 / 7
Orientation	Landscape	Landscape	Landscape	Landscape	Landscape
Power Type	Internal	Internal	Internal	Internal	Internal
Power Supply	100V ~ 240V, 50-60Hz	100 V~240 V, 50 Hz / 60 Hz	100 V~240 V, 50 Hz / 60 Hz	100 V~240 V, 50 Hz / 60 Hz	100 V~240 V, 50 Hz / 60 Hz
Power Consumption					
Maximum	341.5 W/h	220 W/h	240 W/h	320 W/h	500 W/h
Typical	239.1 W/h	154 W/h	168 W/h	224 W/h	350 W/h
Standby	<0.5w	<0.5W/h	<0.5W/h	<0.5W/h	<0.5W/h
Off Mode	0W/h	0 W/h	0 W/h	0 W/h	0 W/h
AC Power Switch	Yes	Yes	Yes	Yes	Yes
Wake up	HDMI	VGA / HDMI / LAN	VGA / HDMI / LAN	VGA / HDMI / LAN	VGA / HDMI / LAN
Technology, No. of touches	IR, 20 Points	IR, 20 points	IR, 20 points	IR, 20 points	IR, 20 points
Interface	USB x2	USB x 2	USB x 2	USB x 2	USB x 2
Tempered Glass, Hardness	3.2mm, 8H	3mm, 7H	4mm, 7H	4mm, 7H	4mm, 7H
AG coating	AG, Haze 1% / AG80	AG75	AG75	AG75	AG75
Eye-Care Solution	Eye-Care	Eye-Care	Eye-Care	Eye-Care	Eye-Care
Germ-Resistant Screen	Yes*	Yes*	Yes	Yes	Yes
Operation Temperature	0°C ~ 40°C	0°C ~ 40°C	0°C ~ 40°C	0°C ~ 40°C	0°C ~ 40°C
Operating Humidity	20% ~ 80%	10% ~ 90%	10% ~ 90%	20% ~ 80%	20% ~ 80%
Input					
VGA	x1	x1	x1	x1	x1
HDMI	x 3 (2.0)	HDMI 2.0 x 3	HDMI 2.0 x 3	HDMI 2.0 x 3	HDMI 2.0 x 3
Audio Input	No	x1 (3.5 mm)	x1 (3.5 mm)	x1 (3.5 mm)	x1 (3.5 mm)
HDMI	x1 (2.0)	x1	x1	x1	x1
Audio Output	x1	x1 (3.5 mm)	x1 (3.5 mm)	x1 (3.5 mm)	x1 (3.5 mm)
USB	USB TYPE A x4 USB TYPE B x2	USB 3.0 x3, USB 2.0 x2	USB 3.0 x3, USB 2.0 x2	USB 3.0 x3, USB 2.0 x2	USB 3.0 x3, USB 2.0 x2
RS232	x1 Input	Yes	Yes	Yes	Yes
RJ45	Yes (LAN)	Yes	Yes	Yes	Yes
Remote Controller	x1	Yes	Yes	Yes	Yes
Internal Speaker	15Wx2	16W x 2	16W x 2	16W x 2	16W x 2
Dimension (mm)					
Screen	1735.98 x 1034.52 x 103.75mm	1268.1 x 814.5 x 115.6	1488.7 x 938.9 x 115.6	1709.4 x 1062.0 x 115.8	1957.1 x 1201.8 x 115.8
Package		1428 x 922 x 225	1675 x 1056 x 220	1923 x 1208 x 283	2214 x 1358 x 283
Weight (kg)					
Screen	54	30.8	41.2	54.4	70.2
Package	73	40.2	55.5	76.1	99.6
Bezel Width (mm)	27/47/27/27	17.8 (Top / Side) / 87.7 (Bottom)	17.7 (Top / Side) / 87.7 (Bottom)	17.7 (Top / Side) / 87.7 (Bottom)	17.7 (Top / Side) / 87.7 (Bottom)
Wall Mounting (VESA) (Screw Type /Max. Length)	Yes (Included)	400 x 200 mm M8 x 25 mm	600 x 400 mm M8 x 25 mm	800 x 400 mm M8 x 25 mm	800 x 600 mm M8 x 25 mm
OPS	Yes	Yes	Yes	Yes	Yes
NFC sensor	No	Yes	Yes	Yes	Yes
Pen Tray	No	No	No	No	Yes

*Part number dependent

Premium RP Series

RP6502	RP7502	RP8602
65"	75"	86"
3840 x 2160	3840 x 2160	3840 x 2160
350 nits	450 nits	400 nits
1200:1	1200:1	1200:1
178 / 178	178 / 178	178 / 178
8 ms	8 ms	8 ms
30,000	30,000	30,000
18 / 7	18 / 7	18 / 7
Landscape	Landscape	Landscape
Internal	Internal	Internal
100 V~240 V, 50 Hz / 60 Hz	100 V~240 V, 50 Hz / 60 Hz	100 V~240 V, 50 Hz / 60 Hz
202.1 W/h	374.9 W/h	423.1 W/h
141.47 W/h	262.4 W/h	296.2 W/h
<0.5 W/h	< 0.5 W/h	<0.5 W/h
0 W/h	0 W/h	0 W/h
Yes	Yes	Yes
VGA / HDMI / LAN	VGA / HDMI / LAN	VGA / HDMI / LAN
IR, 20 points	IR, 20 points	IR, 20 points
USB x 3	USB x 3	USB x 3
4mm, 7H	4mm, 7H	4mm, 7H
AG80	AG80	AG80
Smart Eye-Care	Smart Eye-Care	Smart Eye-Care
Yes	Yes	Yes
0°C ~ 40°C	0°C ~ 40°C	0°C ~ 40°C
10% ~ 90% RH	10% ~ 90% RH	10% ~ 90% RH
x1	x1	x1
HDMI 2.0 x 3	HDMI 2.0 x 3	HDMI 2.0 x 3
x1 (3.5 mm)	x1 (3.5 mm)	x1 (3.5 mm)
HDMI 2.0 x 1	HDMI 2.0 x 1	HDMI 2.0 x 1
x1 (3.5 mm)	x1 (3.5 mm)	x1 (3.5 mm)
USB 3.0 x2, USB 2.0 x3, USB C x1	USB 3.0 x2, USB 2.0 x3, USB C x1	USB 3.0 x2, USB 2.0 x3, USB C x1
Yes	Yes	Yes
Yes	Yes	Yes
Yes	Yes	Yes
16W x 2	16W x 2	16W x 2
1505.9 x 951.0 x 121.5	1735.5 x 1085.8 x 130.7	1988.8 x 1229.8 x 138.4
1660 x 1070 x 275	1880 x 1205 x 280	2140 x 1340 x 280
44	61	79
56	78	97.5
23.4 (Top / Side), 70 (Bottom)	23.4 (Top / Side) / 70 (Bottom)	23.4 (Top / Side) / 70 (Bottom)
600 x 400 mm	600 x 400 mm	700 x 400 mm
M8 x 20 mm	M8 x 20 mm	M8 x 20 mm
Yes	Yes	Yes
Yes	Yes	Yes
Yes	Yes	Yes

Digital Signage Specification

Model	BH2801	ST4302
Screen Size	28"	43"
Touch Technology	-	-
Orientation / Usage hours	Landscape / Portrait 24/7	Portrait / Landscape 18/7
Resolution	1920 x 360 - 16:3	UHD 3840 x 2160
Brightness	1,000 nits	500 nits
Contrast Ratio	3,000:1	1,100:1
Response time	8 ms	6ms
Pixel pitch / Viewing Angle	0.36 mm / 178° / 178°	0.245 mm / 178° / 178°
Built-in Speaker	1Wx2	5Wx2
VGA Input/Output	No / No	x1 / No
DVI-D Input/Output	No / No	x1 / No
HDMI Input/Output	Yes 1 x 1.4 / No	x2 (2.0 x 2) / No
Display Port Input/Output	No / No	x1 (1.1/1.2) / No
Audio (L/R, RCA) Input/Output	No / No	No / No
Line(3.5mm) Input/Output	No / No	No / x1
USB Port	x2 (2.0 x 2)	x3 (2.0 x 3)
RS232 Input / Output	x1 / No	x1 / No
LAN RJ45 Port	x1	x1
OPS/Option board slot	No	No
Weight (without packaging / with packaging) Kg	5.3 / 8.1	10.4 / 14.0
Dimensions (WxHxD) / Bezel (top/bottom/left/right)	728.8 x 162.4 x 45.5 / 14.7 / 14.7 / 14.7 / 14.7	969.9 x 558.3 x 84.8 / 13.0 / 13.0 / 13.0
Wall mount (Screw Type /Max. Length)	400 x 100 (4 holes); 4 - M4 x 10L (VESA)	200 x 400 (4 holes); 4 - M6 x 28L (VESA)
VGA Daisy Chain	No	No
Digital Daisy Chain	No	No
RS232 Daisy Chain	No	No
Warranty	3 years on site exchange	3 years on site exchange



Customer service and aftercare



Training

Ongoing hardware and software training for all users.



Service & support

Remote and onsite technical support available.



5 year warranty

Upon display registration within 30 days of purchase.



Demo fleet

Trial the BenQ education product range with no commitment.

To find out more or visit: www.benq.eu/en-uk/business/