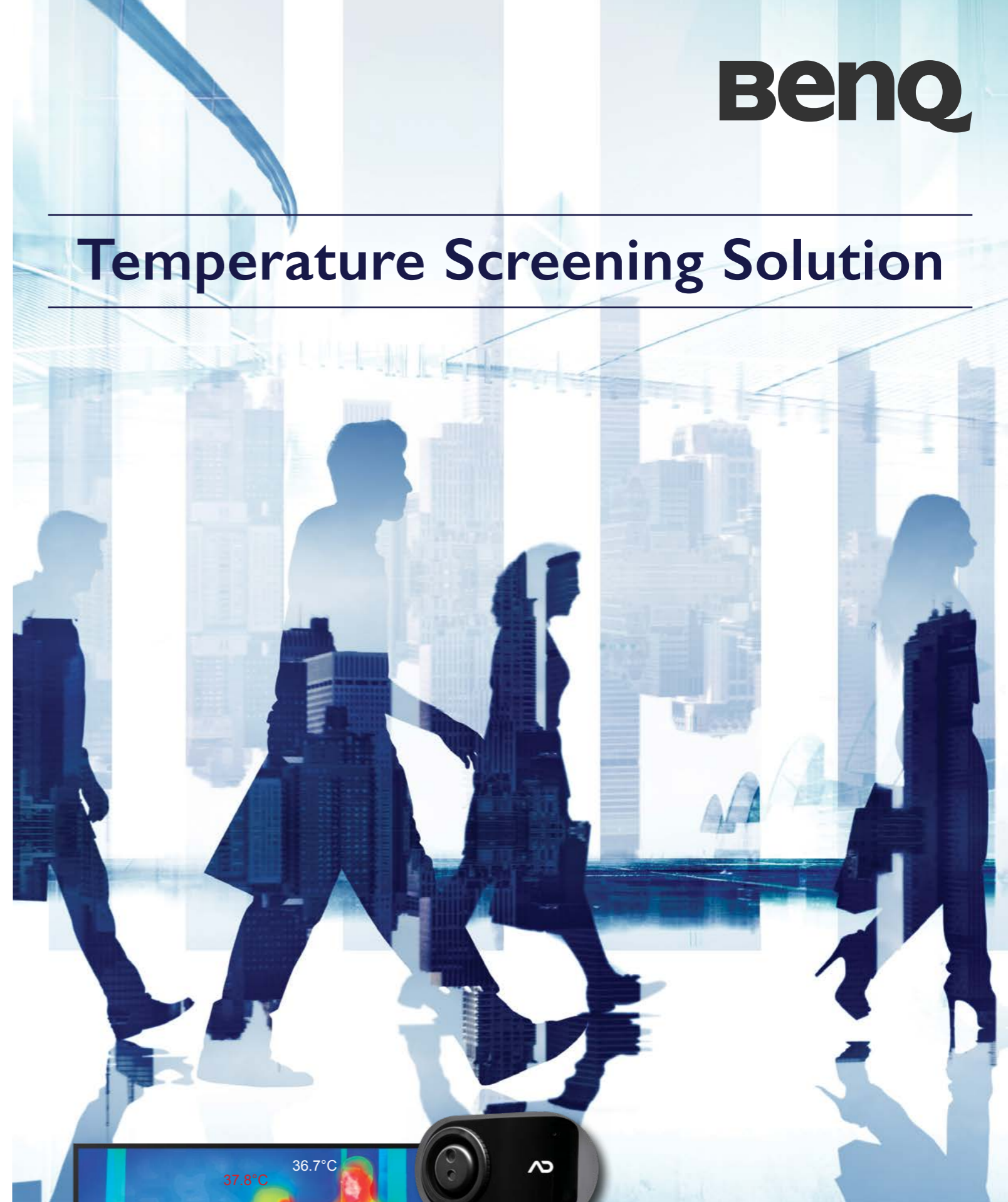


BenQ

Temperature Screening Solution

BenQ



BenQ Europe B.V. Meerenakkerweg 1-17, 5652 AR Eindhoven, The Netherlands Tel: +31-88-888-9200 Fax: +31-88-888-9299	BenQ Austria GmbH Central & Eastern Europe Altmannsdorfer Strasse 89 Top 6 1120 Vienna Austria Tel: +43-1-38-00-300 Fax: +43-1-38-00-399	BenQ Deutschland GmbH Essener Straße 5 46047 Oberhausen Germany Tel: +49-208-409-42-0 Fax: +49-208-409-42-99	BenQ Deutschland GmbH Niederlassung Österreich Wehlstraße 27b / Stg. 2 / Top 5 1200 Vienna Austria Tel: +43-190-7276-0	BenQ Deutschland GmbH Zweigniederlassung Baden Täferstrasse 32 5045 Baden-Dättwil Switzerland Tel: +41-44-74399-99 Fax: +41-44-74399-00	BenQ Benelux B.V. Meerenakkerweg 1-17, 5652 AR Eindhoven, The Netherlands Tel: +31-88-888-9200 Fax: +31-88-888-9299
BenQ Nordic AB Box 1072 Norgegatan 1 16432 Krista, Sweden Tel: +46-8-588-988-00	BenQ UK Ltd. 3 Staplehurst Office Centre, Weston-on-the-Green, Bicester Oxfordshire OX25 3QU United Kingdom Tel: +44-870-850-4417 Fax: +44-870-850-4418	BenQ Italy S.r.l. Viale E. Marelli 165, 20099 Sesto San Giovanni (MI) Italy Tel: +39-02-3664-3740	BenQ France SAS La Boursidière RN186 92357 Le Plessis-Robinson France Tel: +33-0-1-7037-1717 Fax: +33-0-1-7037-1799	BenQ Technology Iberica S.L.U. Calle Constitucion, 3 (2-1) 08960 Sant Just Desvern Spain Tel: +34-93-556-0800 Fax: +34-93-556-0899	BenQ Europe B.V. Representative Office in Russia Park Place Moscow, 113/1 Leninsky, Prospekt B-101, 117198 Moscow Russia Tel: +7-095-937-8532 Fax: +7-095-626-5196

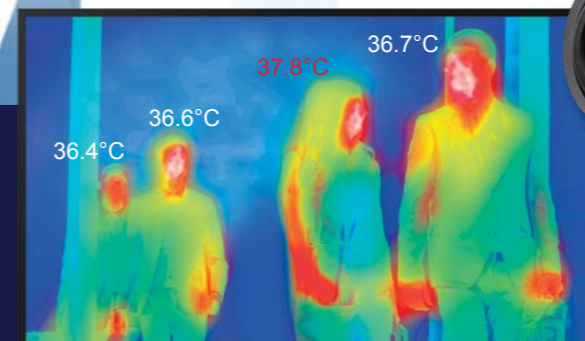


SCAN ME



<https://www.benq.eu/en-eu/business/index.html>

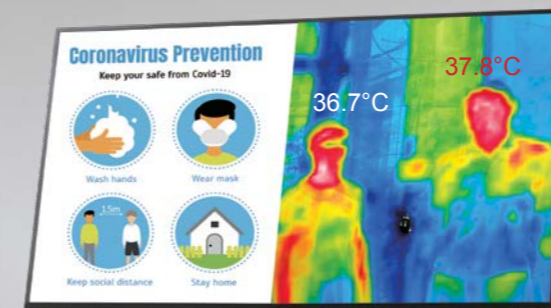
© 2020 BenQ Corp. Specifications may vary by region, please visit your local stores for details. Actual product's features and specifications are subject to change without notice. This material may include corporate names and trademarks of third parties which are the properties of the third parties respectively.



Efficiently screening crowds
while ensuring privacy & safety

Our New Way Forward

BenQ's Temperature Screening Solution is the ideal choice for corporate and retail to bring back normalcy. This contactless temperature screening system ensures that offices, shopping malls, and businesses can function in good order.



BenQ's Temperature Screening Solution

As the world gets used to coexisting with COVID-19, people are hoping that recent inconveniences are gradually removed so that life can go back to normal. The Coronavirus outbreak is reminding people the need to protect themselves and is demanding that businesses assure the well-being of their employees and customers.

BenQ is a leader in product design for visual displays and network convergence technologies with the hope to delight the world. The firm is well-placed to provide state-of-the-art screening solutions.

Common Issues in Temperature Checks

While conducting thorough temperature checks in indoor locations, businesses often face risks and obstacles:



Customers line up for a temperature check



Taking temperatures by hand increases the risk of infection



When tracing is impossible, an opportunity to halt the spread of disease is lost

Ensuring the Well-being in the Workplace

BenQ's Temperature Screening Solution is an effective way of screening the potentially ill, safeguarding indoor locations for employees and customers alike, as it guarantees:

Efficiency

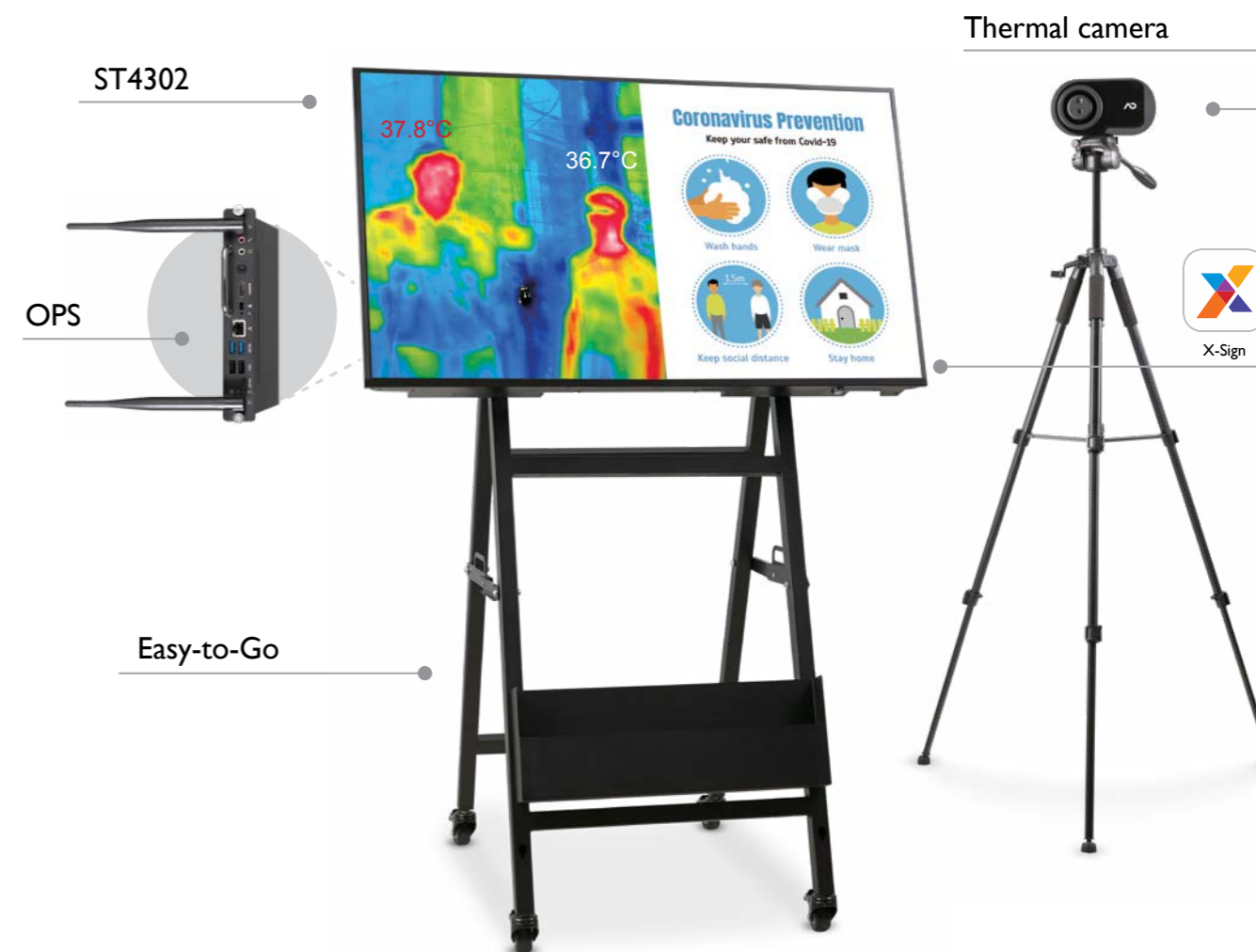
A reliable temperature screening solution can process crowds quickly, making it ideal for rapid screening at doorways. This eliminates the expense of having personnel take temperatures manually and the customer inconvenience of long lines.

Safety

Scanning at a distance reduces the health risks to monitoring personnel, and doing so at speed reduces risk of transmission between passersby, which makes it a superior solution to competing options like handheld thermographic cameras.

Tracing

Data collected by the system can be stored and used to cross-check possible infected persons. This ensures that cases are not misdiagnosed or missed. An automated email is sent to supervising personnel if an anomaly like a high temperature is noted.



Intelligent Scanning & Instant Retrieval

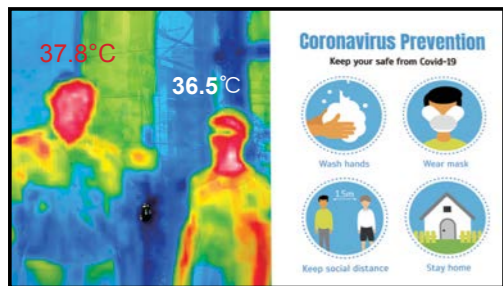
Images are instantly transferred to the user's display for remote monitoring, while multiple test points allow for highly efficient rapid scans. Customisable temperature settings based on conditions on the ground limit errors, while privacy can be protected through the inclusion of both thermal and optical cameras. Where a high temperature is noted, an alarm will go off and related data can be saved and emailed to allow for tracing.



The optical camera preserves privacy

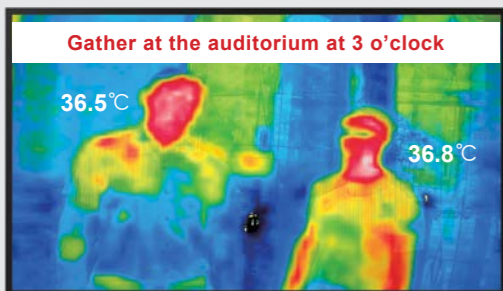


The thermal camera shows high temperatures in red



Flexible Content Management

The X-Sign templates help admins design messages quickly. One half of the screen displays a message, the other half a live image from the thermal camera in either landscape or portrait view.



Prompt Push Messages

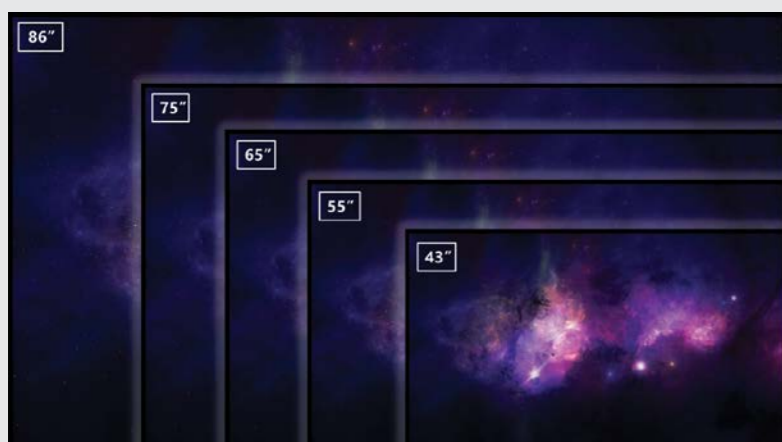
The system allows for customisable messages using X-Sign Broadcast, such as alerts and evacuation calls, as both scheduled or manual messages. These messages can be programmed via both mobile devices and PCs.

Remote Controlled Device Management

Displays can be remotely monitored and managed through the Device Management Solution (DMS). Accessing the DMS Cloud, users can install and execute Android apps on displays remotely. Such convenient solutions reduce energy and personnel costs by being intuitive and remote.



Proven Track Record of Professional Service



BenQ is known across the industry for providing on-point technical solutions to modern-day problems. The ST02 4K Smart Signage series, an all-in-one Android solution, is packed with the latest technology, including 4K resolution at 450 nits brightness. Built to run 18 hours a day, seven days a week, this workhorse can be set to view in landscape or portrait style (available in either 43/55"), allowing for greater flexibility in installation, and can support up to nine cameras.

Temperature Screening Solution

DVY24

Full color video camera		Video stream	
Resolution	2MP(1920x1080 pixels) 16:9	Format	H.264(video camera) / Proprietary(thermal imager)
Field of view	65°(hor.)x40°(ver.)	Bitrate	Max. 4Mbps
Frame rate	Max. 30fps	Users	Concurrent 4 clients
Thermal imager		System	
Resolution	80 x 60 pixels	Network	Support RJ45 ethernet connection
Field of view	51°(hor.)x38.25°(ver.)	I/O	Reset button x1 (Return to factory default) LED indicator (blue)x1 (Normal operation) LED indicator(yellow)x1 (Network packet act.)
Frame rate	Max. 7fps	Power input	5Vdc/2.5A (Micro-USB connector)
Sensitivity	0.1°C / 100mk(NETD)	Operating temp.	0 ~ 40°C , ≤95%RH
Sensing range	20~100°C	Storage temp.	-10~60°C , ≤95%RH
Accuracy	± 0.5°C (Use black body in 1meter)	Dimensions (HxWxD) (mm)	101.3 x 65.5 x 43.8

4K Smart Signage

Models	ST4302	ST5502	ST6502	ST7502	ST8602
Panel					
Screen Size	43"	55"	65"	75"	86"
Resolution	3840 x 2160 pixels				
Brightness (typ.)	450 nits				
Light life (typ.)	30000 hrs				
System					
OS	Android 8.0				
Speakers					
Internal	2 x 12W				
SPDIF-out	1				
3.5 mm line-out	1				
Connectivity					
Video input	2x HDMI (2.0) / DisplayPort (1.2) / VGA				
USB	2x Type-A (2.0) / 1x Type-A (3.0) for OPS				
RJ45	1				
OPS Slot	1				
Physical					
Dimension (WxHxD) (mm)	961.4 x 553.7 x 71.9	1233.6 x 708.4 x 76.6	1450.6 x 828.1 x 78.5	1672.2 x 954.9 x 75.3	1930.8 x 1109.3 x 82.4
Bezel width (T/B/L/R) (mm)	8.7/13.1/8.7/8.7	10.7/14.9/10.7/10.7	8.8/12.8/8.8/8.8	9.0/13.3/9.0/9.0	13.9/23.4/13.9/13.9
Weight (prod./ship.) (kg)	11.6 / 15.9	18.4 / 25.7	22.9 / 33.6	29.3 / 43.7	50.4 / 69.8
VESA mount	200 x 200	400 x 200	400 x 200	400 x 200	600 x 400
Software Compatibility					
DMS	Cloud + Local				
X-Sign	Yes				

OPS

System	
CPU	Intel® Kaby lake- U i5 7200U ,TDP 15W
RAM	DDR4 8G (4GB x2)
HDD/SSD	1TB HDD

Easy-to-Go

Physical	
Dimension (WxHxD) (mm)	548 x 1203 x 679 (compatible with 43/55" signage)